



OLEA EUROPAEA (OLIVE) LEAF EXTRACT

**Botanical Healing,
Miraculous Leaf-Powered!**

www.layncorp.com

CATALOGUE

1

Company Overview

2

Product Introduction

3

Efficacy Verification

4

Applications and Summary



1

Company Overview



ABOUT LAYN

Founded in 2000 and headquartered in Guilin, Guangxi, Layn Natural Ingredients is a leading high-tech innovator in natural health products. The company specializes in the production, research, and development of premium botanical ingredients, providing innovative solutions for the food & beverages, dietary supplement, personal care, animal feed, and pet nutrition industries worldwide.

High-Tech Industry Leader in Natural Botanical Extraction



- Nearly **30 years** of expertise in botanical extraction
- **Over 300** core technologies for natural ingredient extraction
- **Drafting Organization** for the international business standard of Centella Asiatica Extract

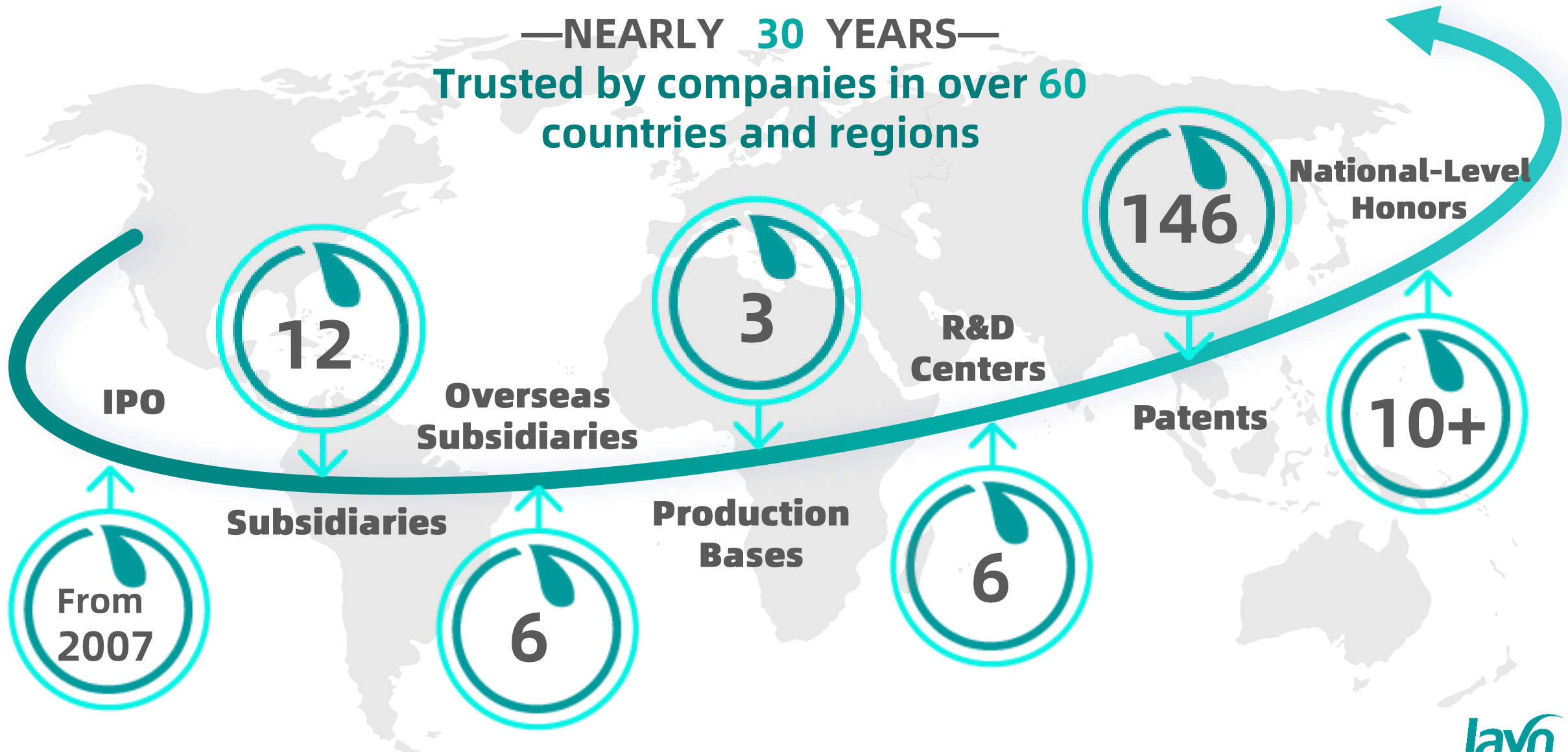
Key Recognitions:

- Designated a **“National Green Factory”** in 2019

GLOBAL BOTANICAL INNOVATION

—NEARLY 30 YEARS—

Trusted by companies in over 60 countries and regions



Four Core Advantages



01 Advantage in Raw Materials

- The sustainable use of plant resources
- Standardized planting
- Non-GMO standards

02 Advantage in R&D

- Post-Doctoral Research Center
- Guangxi Academician Workstation
- National Tropical Fruit Research Center
- Undertakes national key scientific research program

03 Advantage in Testing

- ISO/IEC 17025:2017 accredited
- Management system has been established according to ISO17025

04 Advantage in Capacity

-INTELLIGENT MANUFACTURING

- Intelligent botanical extraction factory
- Annual raw material processing capacity exceeds 100,000 tons

Quality Certification

Monk Fruit Extract and Stevia Extract have obtained FDA GRAS certification in the United States.





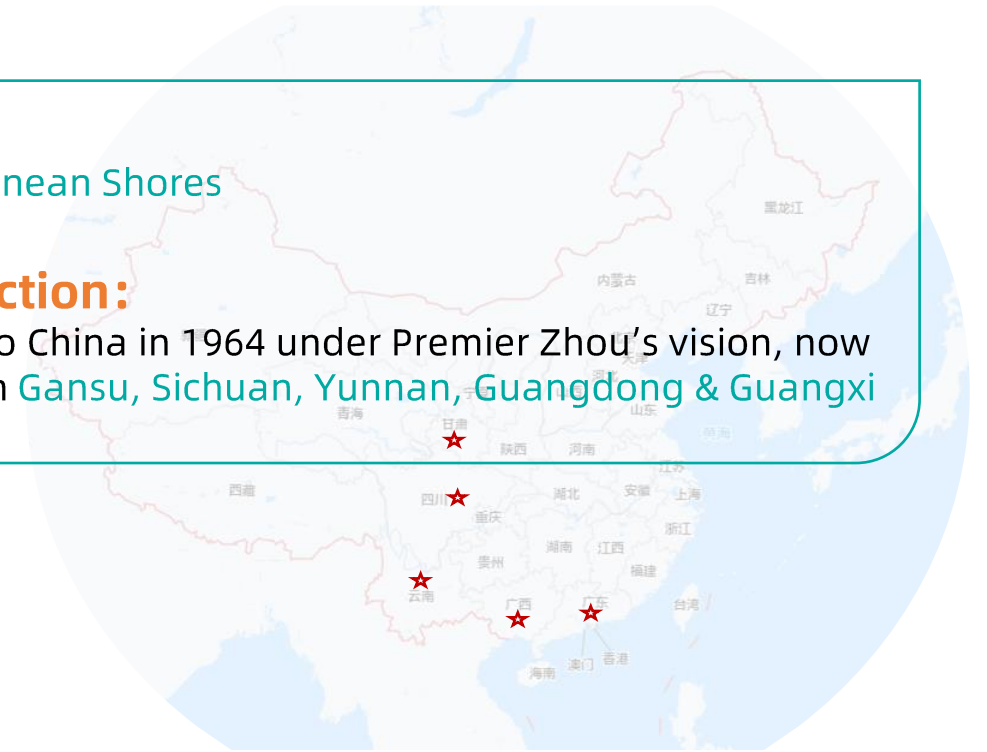
2

Product Introduction

Olea Europaea



- **Origin:**
Mediterranean Shores
- **Introduction:**
Brought to China in 1964 under Premier Zhou's vision, now thriving in Gansu, Sichuan, Yunnan, Guangdong & Guangxi



Accolades



"Tree of Life" : Exceptional vitality and longevity, with lifespans exceeding 1,000 years, earning "Longevity Tree"

"Tree of Peace" : -**Mythological Origin:** In Greek mythology, Athena triumphed over Poseidon in the contest for patronage of Athens by gifting humanity the olive tree

-**Symbolism:** Universally recognized as an icon of peace, wisdom, and perpetuity

"Liquid Gold" : OLIVE OIL extracted from its fruit

Olea Europaea (Olive) Leaf Extract

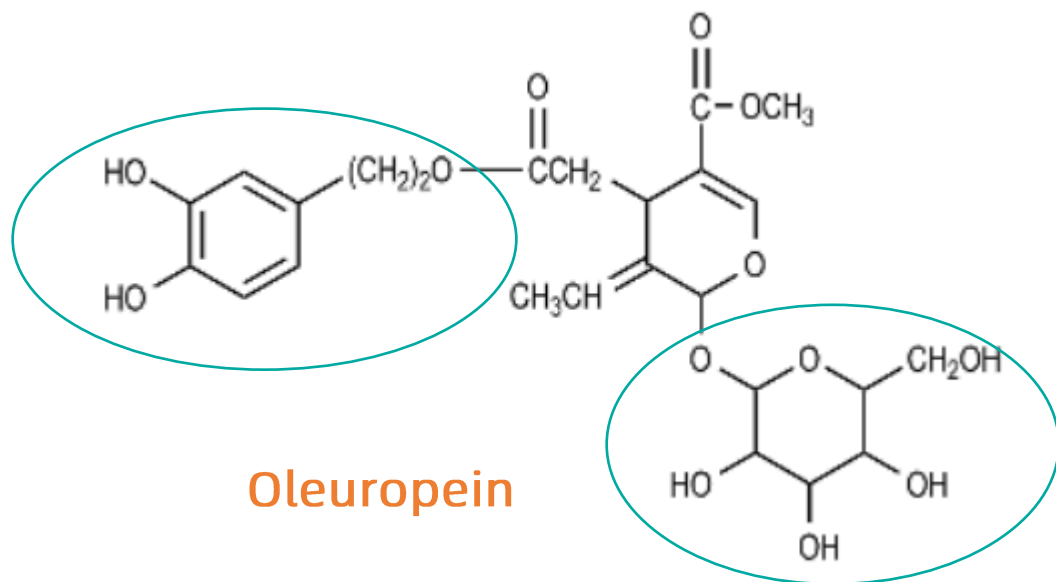


Main active ingredients in olive leaves :

- Oleuropein, Hydroxytyrosol, Flavonoids, etc.

Oleuropein

- The **most potent** bioactive component in olive leaves, and in which also reaches the **highest concentration**.



INCI	OLEA EUROPAEA (OLIVE) LEAF EXTRACT
Main Active Ingredient	Oleuropein
Appearance	Off-White Powder
Product Specification	OLE24W (40%) 、OLE80 (75%)
Solubility	Water-Soluble
Dosage	0.2-2.0%
Efficacy	Soothing, Repairing, Antioxidant, Whitening, Antibacterial
Application	Soothing and Repairing, Post-sun care, Whitening and other formulations

Product Highlights of Layn

Ultra-High Active Content

Oleuropein: **75%**

Special Process

Freeze-drying

Selected Origin

Raw material mainly from:

Longnan (Gansu)

Golden Latitude 33°N
Golden Belt of Olive Oil Production



Intelligent Manufacturing

High-quality



Longnan (Gansu)

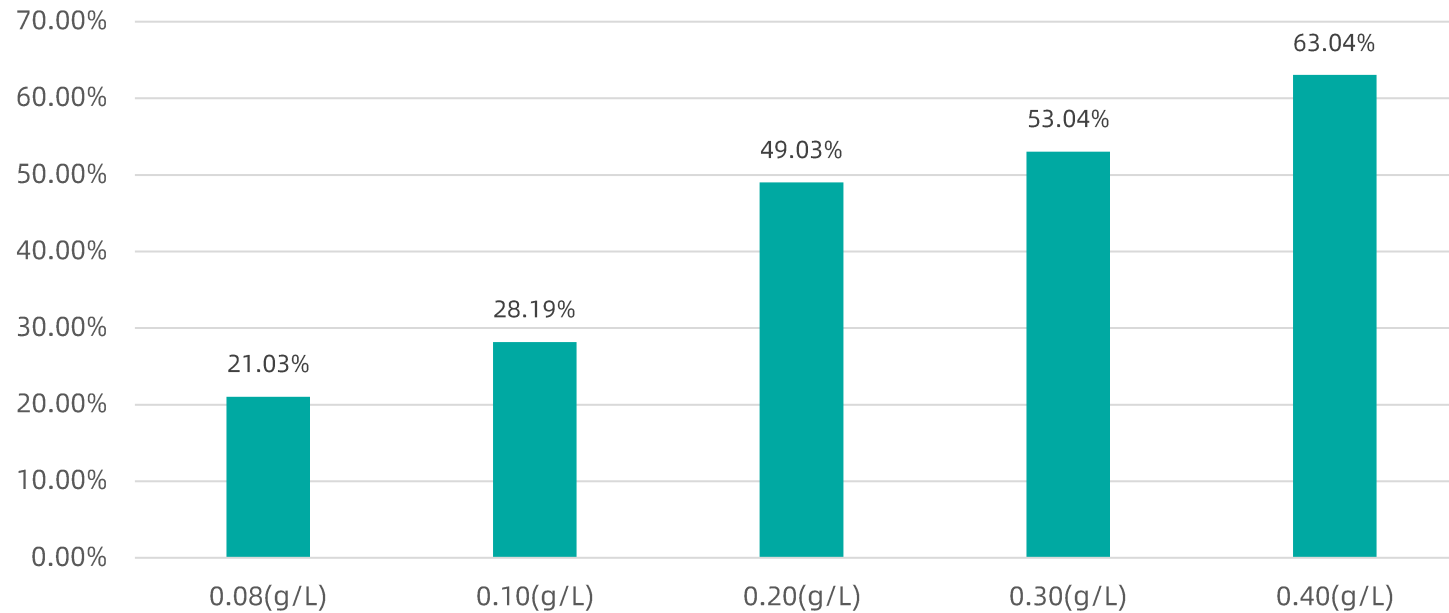
- Certified as a **Grade I Suitable Cultivation Zone**, by the International Olive Council
- Included in the **IOC's World Olive Map**
- Ranked among the **world's Elite Olive Oil terroirs**



3

Efficacy Verification

Antioxidant (in vitro)



Effect of *Olea Europaea* (Olive) Leaf Extract on the scavenging rate of DPPH

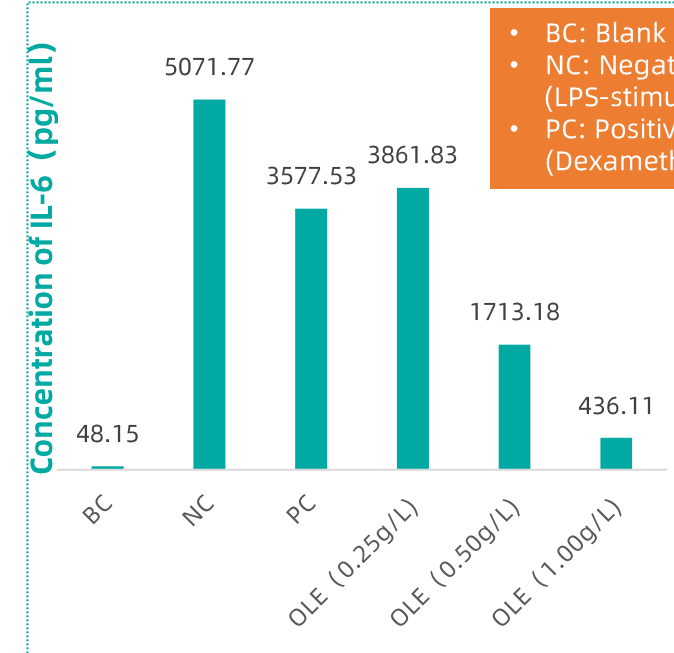
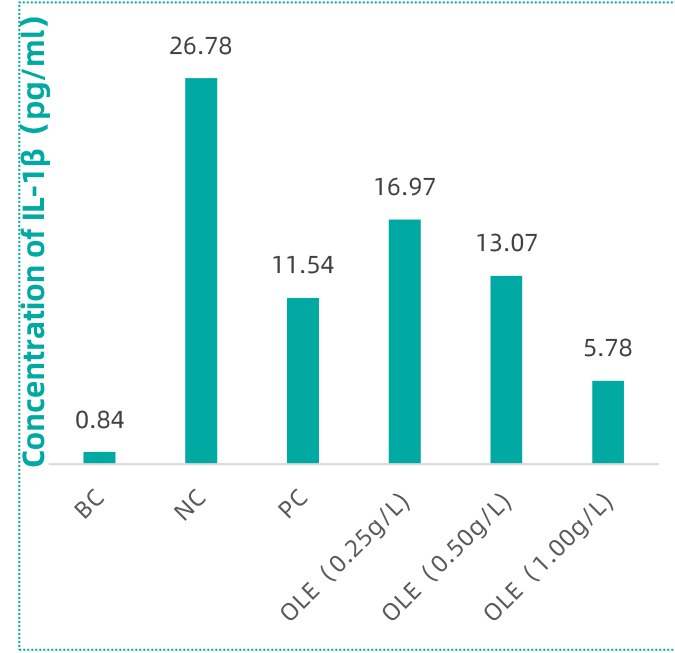
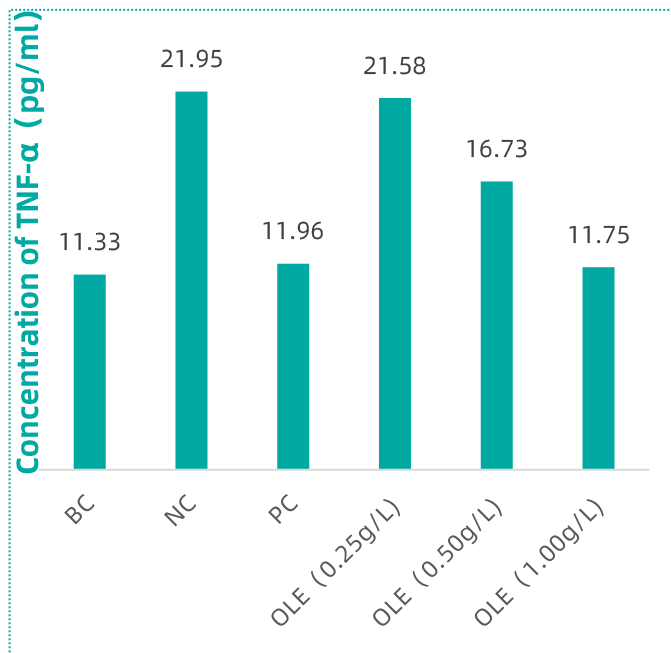
Conclusion

- The *Olea Europaea* (Olive) Leaf Extract exhibits notable DPPH-scavenging activity.
- The scavenging rate against DPPH reached **63.04%**, at a concentration of 0.40 g/L.

Soothing (in vitro)

Method

- The inhibitory effect of Olea Europaea (Olive) Leaf Extract on inflammatory factors (TNF- α , IL-1 β , IL-6) was evaluated through a macrophage model stimulated by lipopolysaccharide (LPS).



- BC: Blank control
- NC: Negative control (LPS-stimulated)
- PC: Positive control (Dexamethasone, 100 mg/L)

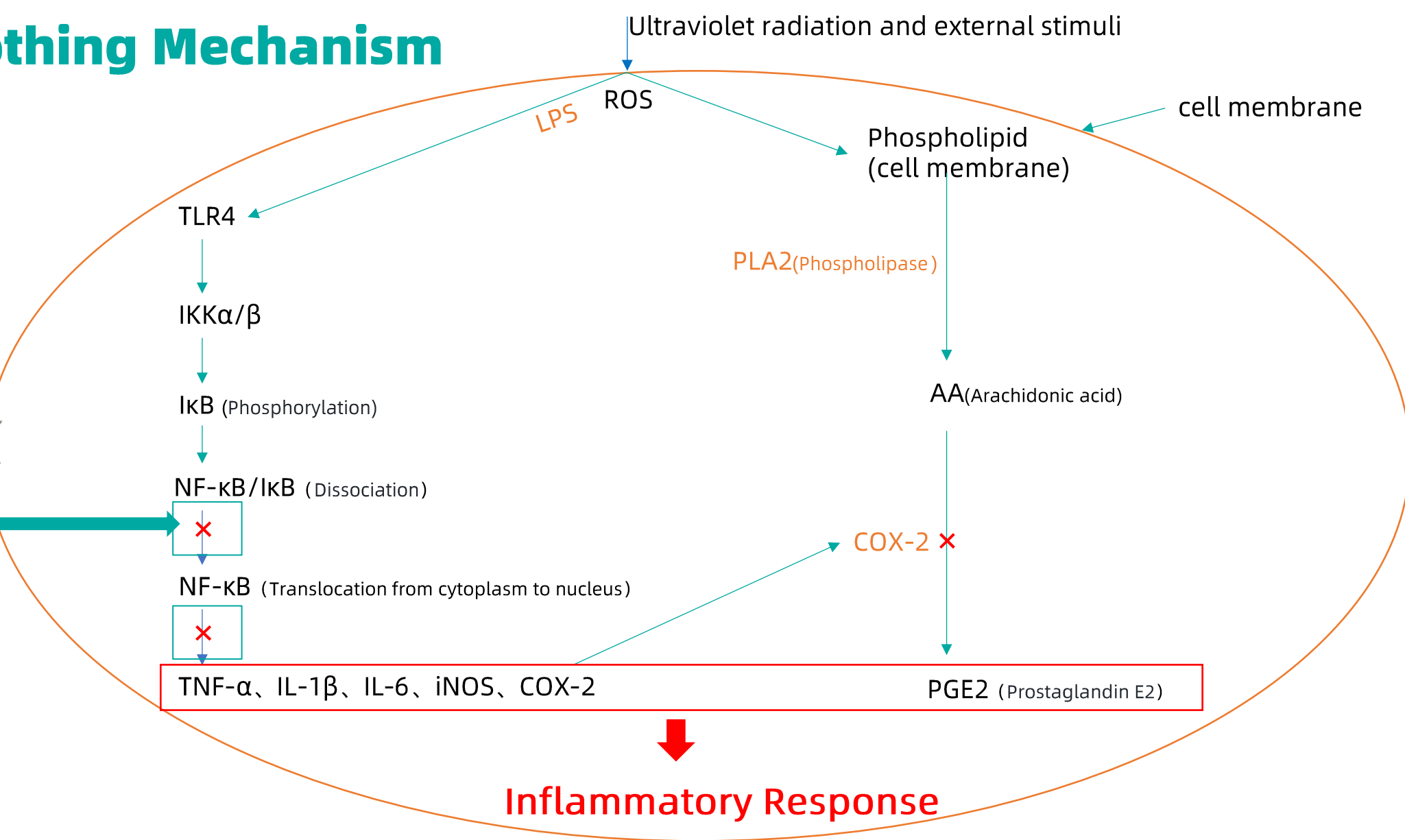
Conclusion

- Olea Europaea (Olive) Leaf Extract significantly inhibits the secretion of inflammatory factors of TNF- α , IL-1 β , and IL-6.
- At a concentration of 1.00g/L, the inhibition rates of Olea Europaea (Olive) Leaf Extract on TNF- α , IL-1 β and IL-6 were 46.49%, 78.43% and 91.40%, respectively.

Soothing Mechanism



Oleuropein

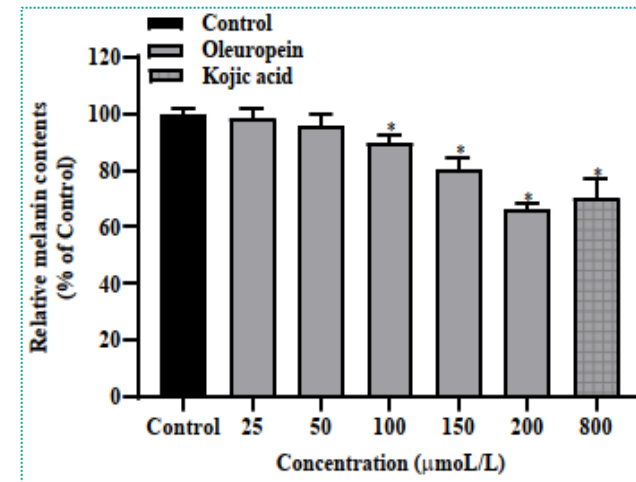
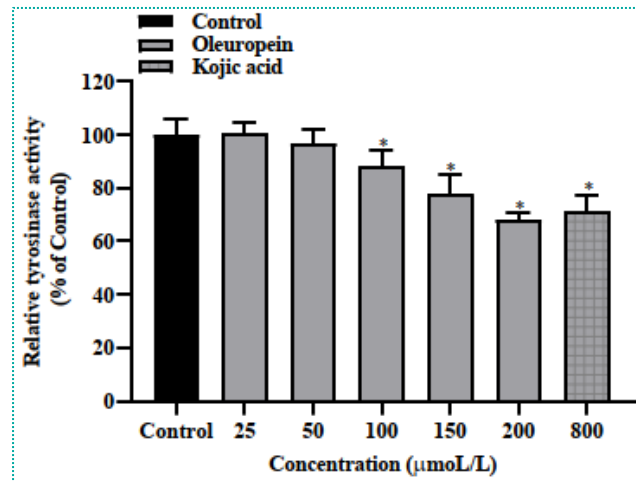


Source: Oleuropein attenuates lipopolysaccharide-induced acute kidney injury in vitro and in vivo by regulating toll-like receptor 4 dimerization

Whitening (in vitro)

Method

- The effects of oleuropein on tyrosinase activity and melanogenesis were investigated in B16 mouse melanoma cells, using kojic acid as the positive control.



Effects of oleuropein on tyrosinase activity of B16 cells.

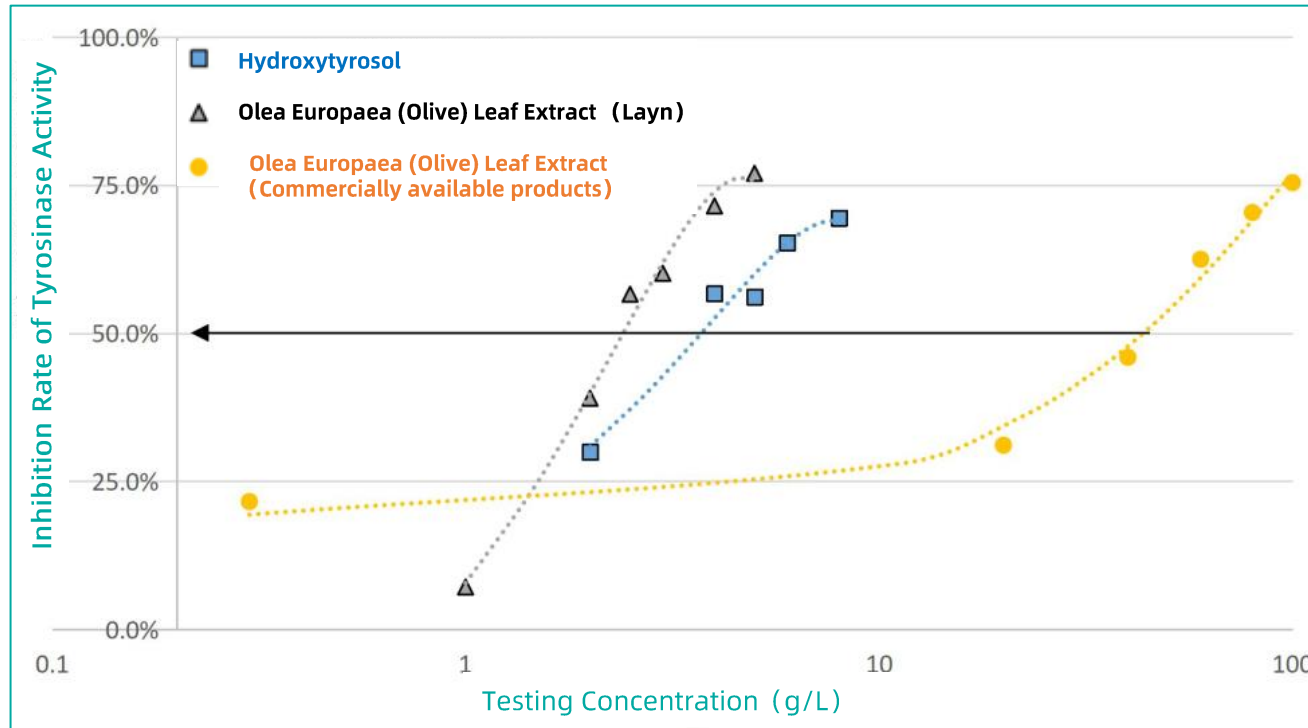
*: $P < 0.05$

Effects of oleuropein on melanin production of B16 cells

Conclusion

- Oleuropein significantly inhibits both tyrosinase activity and melanogenesis, demonstrating superior efficacy compared to kojic acid.

Whitening (in vitro)



Olea Europaea (Olive) Leaf Extract (Layn)

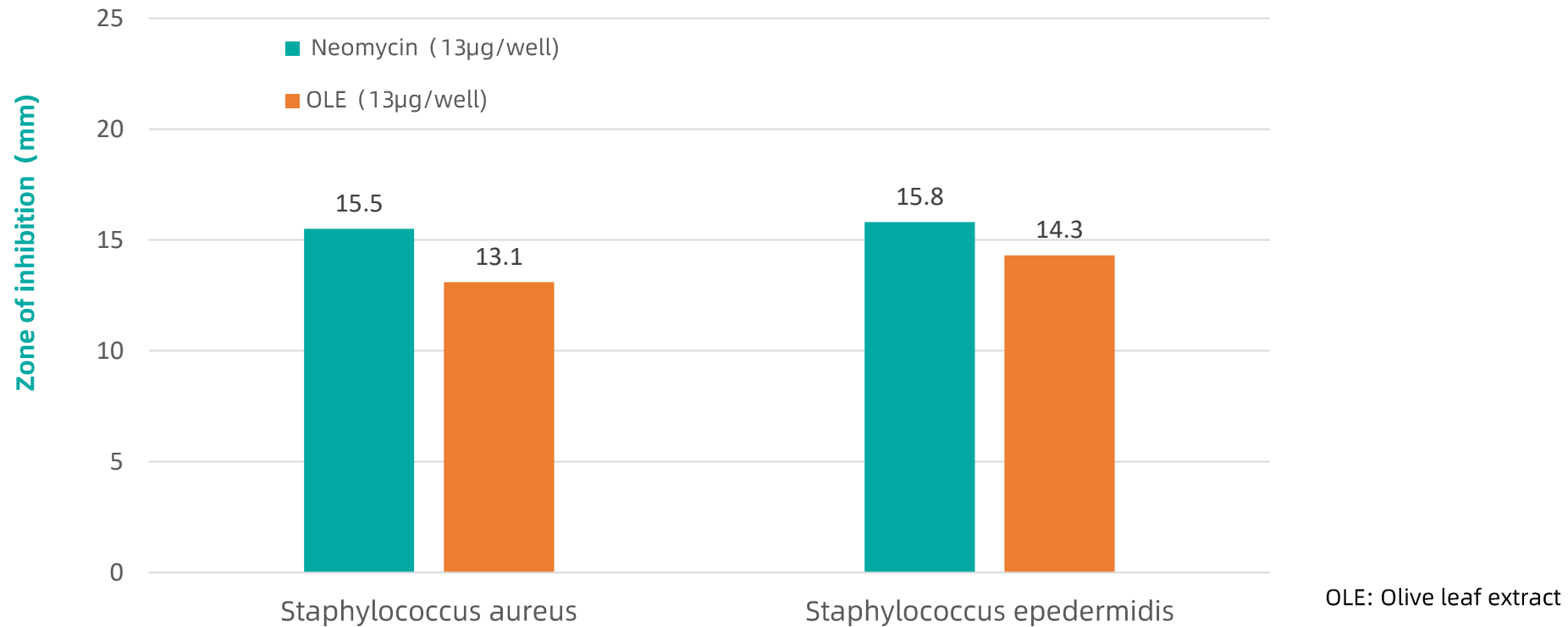
Testing Concentration (g/L)	Inhibition Rate (%)
1.00	7.16%
2.00	39.03%
2.50	56.58%
3.00	60.12%
4.00	71.49%
5.00	76.99%

The inhibitory effect of Olea Europaea (Olive) Leaf Extract on tyrosinase activity

Conclusion

- Olea Europaea (Olive) Leaf Extract demonstrates inhibitory effects on tyrosinase activity.
- At a concentration of 5.0 g/L, the inhibition rate of tyrosinase activity by Olea Europaea (Olive) Leaf Extract (Layn) reached 76.99%, **outperforming** both **commercial products** and **hydroxytyrosol**.

Antibacterial



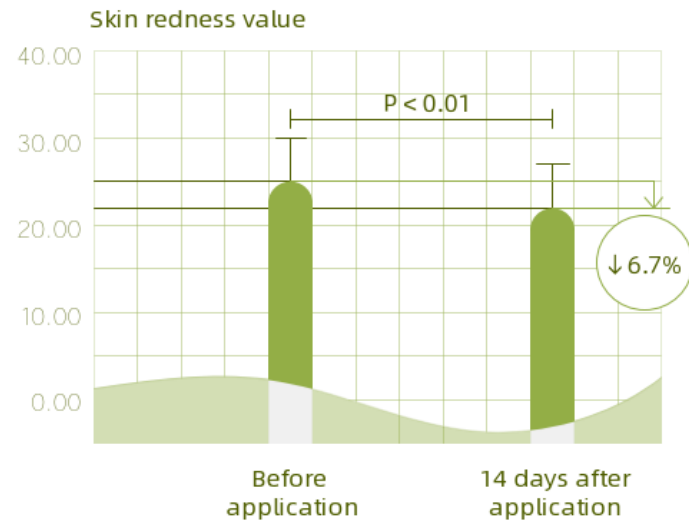
Conclusion

- OLE has shown an antibacterial activity similar to neomycin, against **gram positive bacterial strains** (S. aureus and S. epidermidis.)

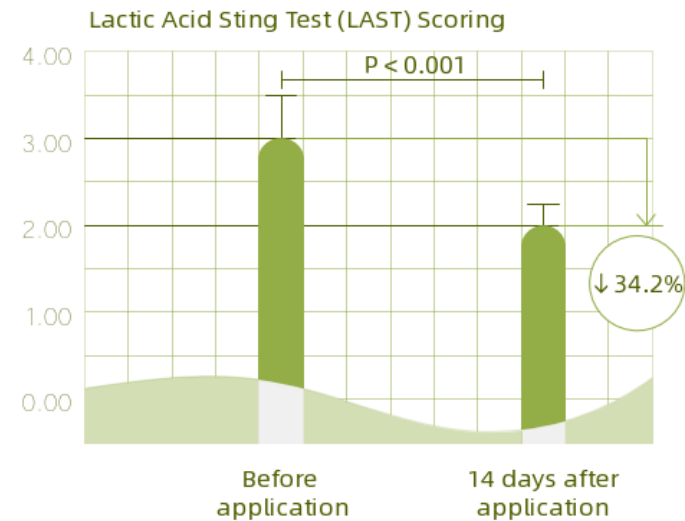
Soothing (in vivo)

Method

- Volunteers applied facial serum containing 1.5% Olea Europaea (Olive) Leaf Extract every morning and evening. The product's soothing and repairing efficacy was evaluated before use and after 14 consecutive days of application.



Temporal variations in skin redness values



Temporal variations in LAST (Lactic Acid Sting Test) scores

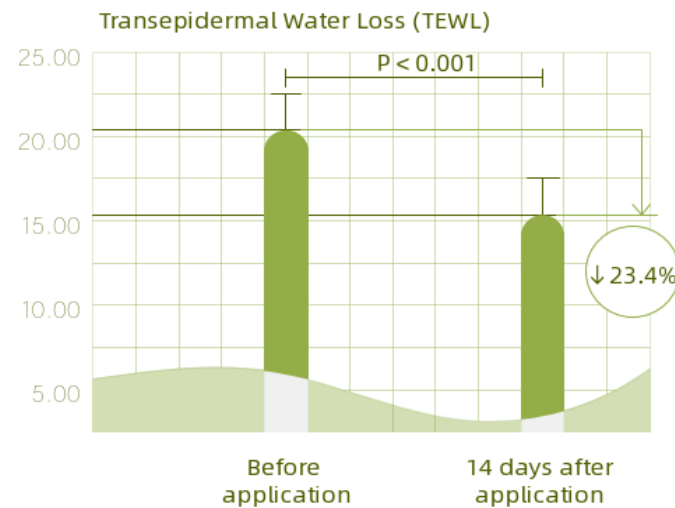
Conclusion

- After using the product for two weeks, the skin redness value and lactic acid stinging test score decreased by 6.7% , 34.2% significantly .
- The skin redness and tolerance were improved.

Repairing (in vivo)

Method

- TewameterTM Hex test Skin transepidermal water loss (TEWL)



Conclusion

- 14 days after application, the transepidermal water loss value of the skin decreased significantly by **23.4%**.
- The skin barrier was improved.

Oleuropein's soothing and barrier-repairing efficacy against UV-induced stimulation (in vivo)

Method

- Human skin was exposed to UV radiation without any treatment as a control (a, b). After 24 hours of exposure, O/W emulsion and gel containing 0.1% oleuropein were applied respectively, as (A', B'). The soothing effect and skin barrier function were evaluated.

	O/W emulsion			Emulsion gel		
	a/S ratio (mean ± SD)	A'/S ratio (mean ± SD)	Z-value W ₊ value	b/S ratio (mean ± SD)	B'/S ratio (mean ± SD)	Z value W ₊ value
TEWL	1.5658 (0.4750)	0.9666 (0.2378)	-2.366 0.018	1.5384 (0.4986)	0.9186 (0.1733)	-2.366 0.018
LDF	8.5688 (3.7033)	5.012 (2.3544)	-2.0284 0.043	7.6467 (3.2856)	5.3475 (2.1272)	-2.0284 0.043
a*	6.6623 (5.2669)	4.6811 (3.3804)	-2.3664 0.018	6.2033 (4.9220)	5.1164 (4.2479)	-1.5213 0.128

TEWL : transepidermal water loss
 LDF : blood flow
 a* : erythema index
 S : skin basal values

Conclusion

- After UV radiation, Oleuropein formulations show lenitive efficacy reducing TEWL, blood flow, erythema by about 35%、30%、22% respectively.
- Normalizing effect on the stratum orneum barrier. (TEWL: A'/S、B' /S ~1) 。



4

Applications and Summary

Applications



PHYTO-C

见证欧玛橄榄精华 修护真实力



NO.1[^] 修护精华

天猫榜单 TOP1[#] 祛痘精华热卖榜

4周痘痘严重程度 -20%*

4周改善屏障 +20%*

4周出油黏腻 -54.1%*

PHYTO-C SKIN CARE
SUPERHEAL[®] O-Live Gel
NET 30 ml/1 fl oz

*具体功效数据来源见详情页角标。
^指的是欧玛橄榄修护精华，在店铺内销量NO.1,数据来源于天猫生意参谋后台，截止2025年5月31日。
#数据来源于天猫榜单，根据2025年天猫618期间的销售与成交金额排序，截止2025年6月20日。

欧玛橄榄精华 「三效合一」

- 1 泛红修护
修护肌肤 解决泛红危机
- 2 润护屏障
修护脆弱屏障
- 3 控油维稳
平衡肌肤油脂

无水萃取技术²
「褪红修护」更着力

Olea Europaea (Olive) Leaf Extract

油橄榄精粹³

通过萃取技术中的热处理及碱处理等多项复杂程序，
保证橄榄苦苷与羟基酪醇的稳定性能。

实现舒缓褪红，修护肌肤的功效！

1功效数据测试报告由三星莱伊Eviskin (第三方检测机构) ；20位志愿者 (19-59岁) 使用样品4周后，根据志愿者面部褪红区分析 a) 精
粹成分分离 TEWL测试，相关人体功效评价试验结论。 专利号：CN10200906-05-R1-01，实际使用效果因人而异。
2根据中国发明专利 (SUPERHEAL[®] OleaLeafExtractpatent) 及发明专利 (乳肌肽Patent) 专利号：US8,743, 447B2。
36%的总配料成分表中的油橄榄叶提取物。

Olea Europaea (Olive) Leaf Extract

- Soothes Redness
- Strengthens Skin Barrier



油橄榄叶提取物+积雪草提取物
双重舒缓² 加乘修护³



Dual-Action Soothing,
Synergistic Repair

Olea Europaea (Olive)
Leaf Extract

- Soothing
- Repairing

Centella Asiatica Extract

- Barrier-Repairing
- Skin-Stabilizing

L'ORÉAL

L'ORÉAL PARIS

REVITALIFT ANTI-WRINKLE NIGHT CREAM

全新欧莱雅「复颜晚霜」^{#1}

晚间三抗 逾夜强韧

93.5%
肌肤强韧
强韧了!

3
ANTI
[抗皱]
[抗松]
[抗暗淡]

A.P.C 精研体系



REVITALIFT
NIGHT CREAM
PRO-RETINOL+ DIPEPTIDE+VCG

L'ORÉAL PARIS 巴黎欧莱雅

全新欧莱雅「复颜晚霜」^{#1}

熟龄肌必选的 **三抗晚霜**

看上去比同龄人更年轻

抗皱·滑
淡化皱纹 平滑细腻

抗松·紧
抵御松垮 提拉紧致

抗暗淡·亮
改善暗沉 通透焕亮



L'ORÉAL PARIS 巴黎欧莱雅

全新欧莱雅「复颜晚霜」^{#1}

携同经典 **舒润矩阵**

温和保湿 安心饱满

依克多因[®]
提升防护力, 舒缓刺激

积雪草精粹[®]
抑制胶原蛋白降解
修护角质层屏障

油橄榄叶提取物
降低外界破坏
协同舒缓刺激



Olea Europaea (Olive)
Leaf Extract

- Soothing

Centella Asiatica Extract

- Barrier-Repairing
- Inhibiting collagen degradation

SKIN CEUTICALS



SKINCEUTICALS
全球10,000+高端院线专业选择*

修丽可色修精华¹
中国皮肤学专家推荐
千人实测² 快速褪红

1小时褪红 -61% ³	1小时强韧屏障 +40% ⁴	项目后30分钟泛红 -27% ⁵
-----------------------------------	-------------------------------------	---------------------------------------

NO.1
褪红精华

色修特研褪红配方

Phyto Botanical

复合植萃溶液⁸

1

先抑制泛红成因 褪红更快

未使用色修精华 TRPV-1活跃	使用色修精华后 TRPV-1降低
-------------------------	-------------------------

图示绿色荧光信号为TRPV-1
经测试对比证明, 色修精华有效抑制TRPV-1, 具有舒缓功效, 能有效缓解泛红, 强韧屏障。

Olea Europaea (Olive)
Leaf Extract

- Reduces redness

Others

1.325%油橄榄精华液

- + 改善泛红
改善肌肤泛红状态
- + 舒缓肌肤
缓解灼热、刺痛、干燥、
紧绷等不适
- + 强韧屏障
提升肌肤屏障防护力
抵御外界刺激
- + 保湿维稳*
用酸用a前打底，
提升肌肤耐受力



John Jeff

5%¹高浓B5 15min²红敏双修

One leaf 修护修色补水面膜

ONE LEAF
双修面膜
敏感肌专研

速修泛红
-24.86%²

急修屏障
+19.08%²



*专利玻尿酸：指水解透明质酸钠，
中国发明专利：ZL 201210317032.5

One leaf

150+皮肤学专家认证
安修泽「油橄榄精华」
闪修褪红 14天稳护屏障

[2小时修红¹] [2周红痘印²] [2周屏障³]
[-15.2%] [-52.1%] [+25.8%]

敏肌
专研



ONCUR

Summary

Highlights

- Natural
- Selected Origin (Longnan (Gansu))
- Special Process (Freeze-drying)
- Ultra-High Active Content
- Intelligent Manufacturing (High-quality)
- Multi-Effect (Soothing, Repairing, Antioxidant, Whitening, Antibacterial)



Application

Formulations, such as:

- Soothing and Repairing
- Post-Sun care
- Acne-Prone Skin Care

Dual-Action Soothing, Synergistic Repair

Olea Europaea (Olive) Leaf Extract
+ Centella Asiatica Extract

Soothing

- TNF- α
- IL-6
- IL-1 β
- iNOS
- COX-2

Antioxidant

- Direct scavenging of free radicals²
- Activation nuclear factors (Nrf2)
- Activation of antioxidative enzyme activity
- Inhibition of lipid peroxidation
- Reduction of metal ion-catalyzed oxidation

Antibacterial

- Phenolic hydroxyl groups interact with peptidoglycan in the bacterial cell wall¹

Whitening

- Inhibits tyrosinase activity
- Inhibits Melanogenesis

Source: ¹The effect of the olive phenolic compound, oleuropein, on growth and enterotoxin B production by Staphylococcus aureus

¹On the in vitro antimicrobial activity of oleuropein and hydroxytyrosol

²Diabetic cardiomyopathy and its prevention by Nrf2: current status, In vivo and in vitro antioxidant activities of methanol extracts from olive leaves on Caenorhabditis elegans



THANK YOU!

www.layncorp.com

Layn Global headquarters
19 Renmin South Road, Lingui District,
Guilin City, Guangxi Province, China
Phone: +86-773-3568816
E-mail: info@layn.com.cn

Layn Asia Pacific
No.40, Lane 2777, Jinxiu East Road,
Pudong New Area, Shanghai
Phone: + 86-21-68981821
E-mail: marketing@layn.com.cn

Layn Europe SRL.
c/o University Campus of Savona
Via Armando Magliotto 2 - Locatelli
building 17100 Savona, Italy
Phone: +39 019 7703407
E-mail: info@layn.eu

Layn USA, Inc.
420 Exchange Suite No. 210
Irvine, CA 92602
Phone: 1-949-387-6840
E-mail: info@layn-usa.com