

# SCH-Tanning peptide



**special  
chemicals**

## NEXT GENERATION PEPTIDES

Developments of new cutting-edge peptide-based drugs and molecules with pharmacological, diagnostic and cosmetic interest.

## SCH- Tanning peptide



*Tanned skin became a trend, to avoid risks from damaging UV rays, it is necessary to take alternative steps to look a darkened skin and safe solution could be the **cosmetic bronzers peptides***

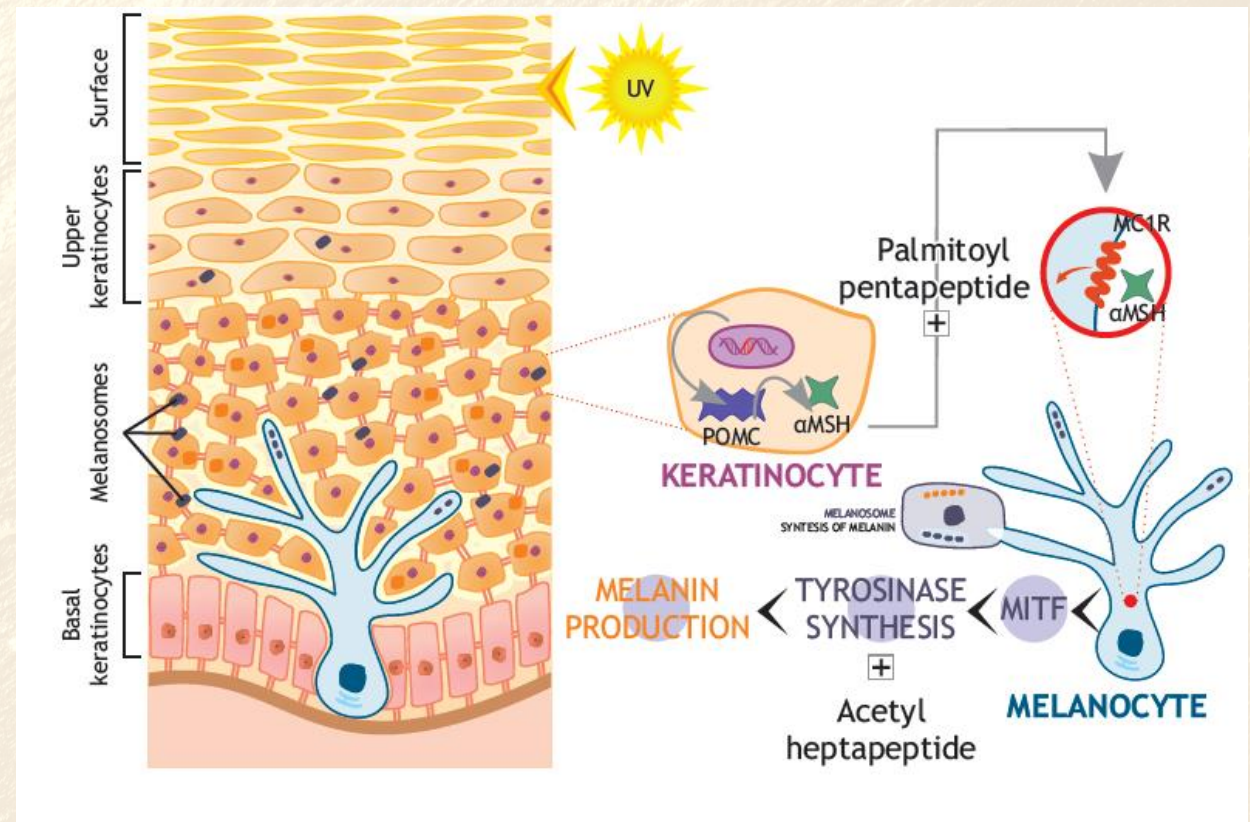




Main pathways  
to increase  
melanin include:

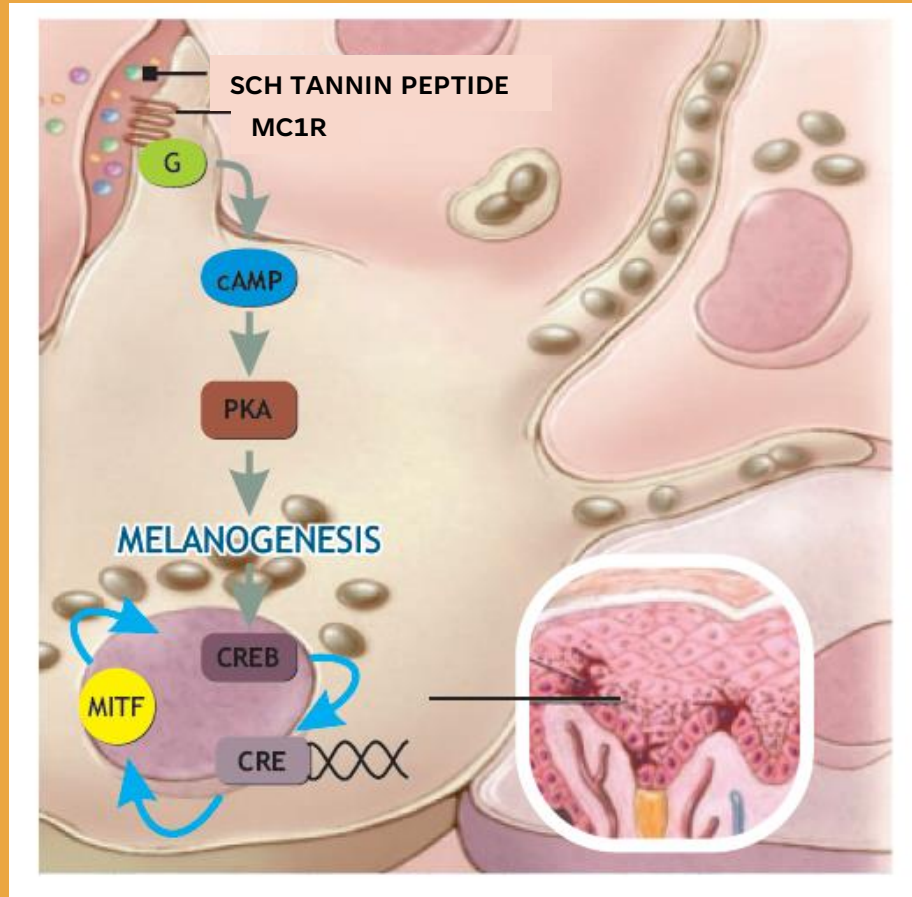
- Activation of MC1R
- Stimulation of Tyrosinase activity

## Route ways to increase skin melanin





# SCH- Tanning peptide






Two ways are activated to increase melanin, two peptides are the key directly stimulates Tyrosinase activity:

## Acetyl hexapeptide-1

Binds to MC1R and activates Adenylate Cyclase increasing cAMP that stimulate PK.

PK phosphorylates regulatory proteins including nuclear CREB  
CREB activates MITF transcription factor needed to stimulate the expression of:

-  Tyrosinase
-  Tyrosinase related protein 1
-  Dopachromo tautomerase

These enzymes are necessary for the production of melanin.

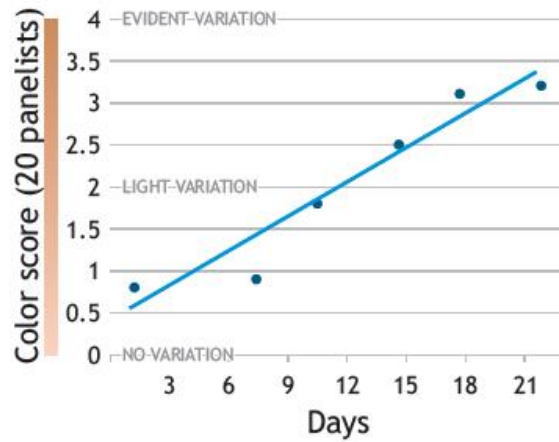
## Acetyl-heptapeptide-1

Directly stimulates Tyrosinase activity

# SCH- Tanning peptide



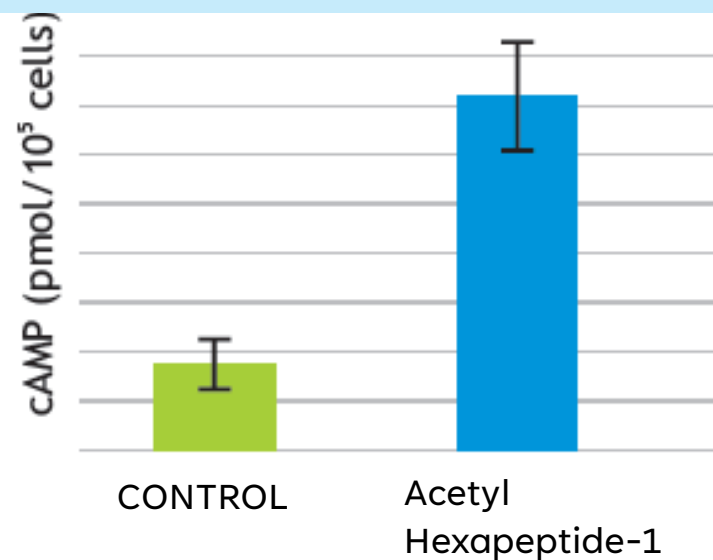
## SCH Tanning peptide in vivo study (Twice daily application)



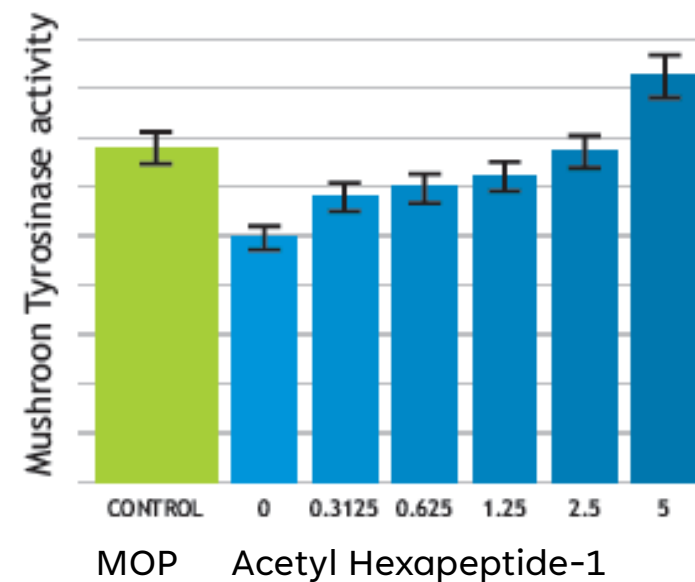
# SCH- Tanning peptide

## SCH Tannin peptide in vitro assay

### Stimulation of adenylate cyclase by Acetyl hexapeptide-1



### Tyrosinase activation by Acetyl Hexapeptide-1



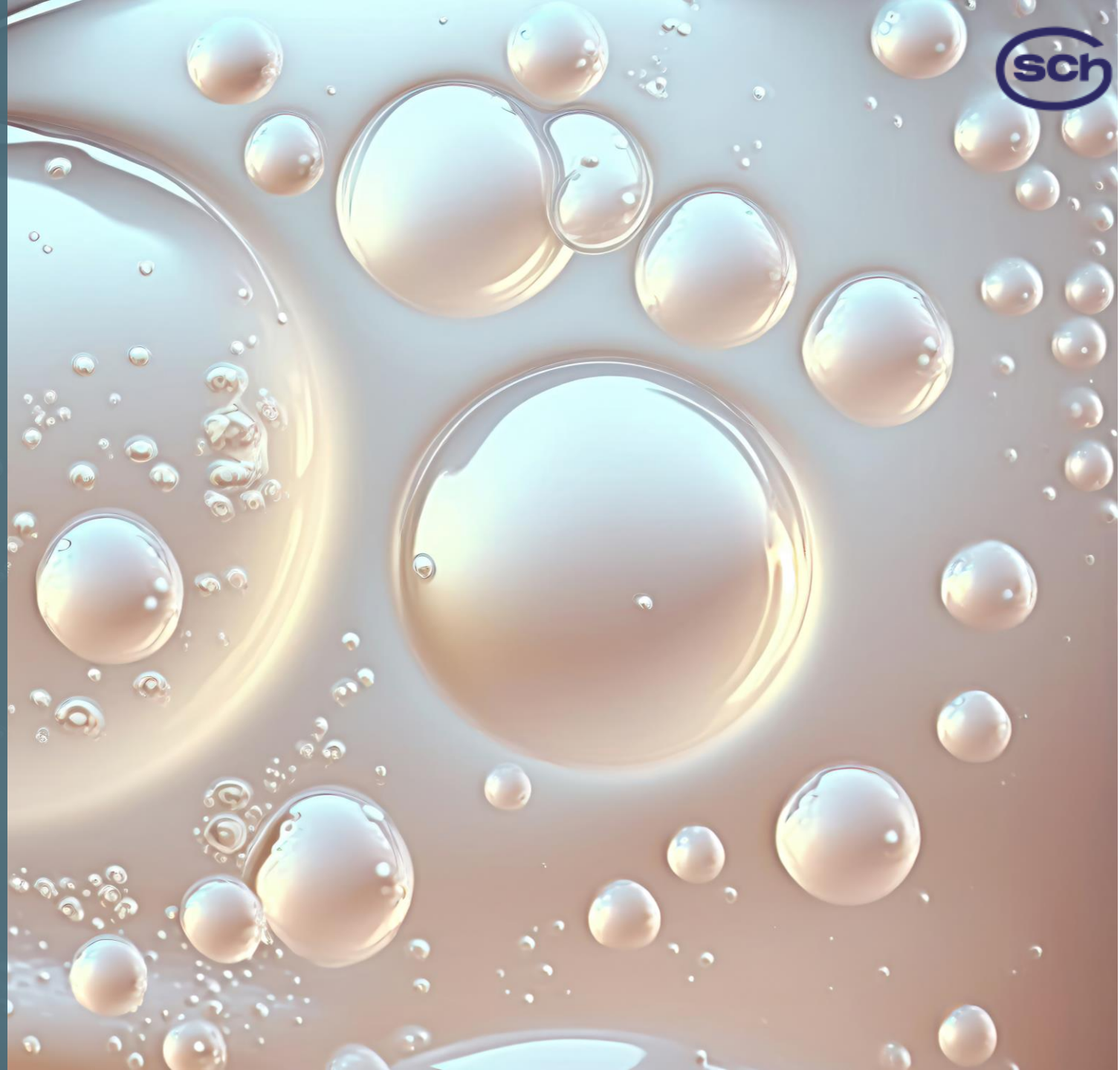


## SCH Tanning peptide in vivo study (test on caucasian skin)



## SPECIFICATIONS

- Apperance: Powder form
- INCI.: Dextran, Acetyl-hexapeptide-1
- Recommended dose: 3-5% from 1g/L solution
- Legal status: EU|US|CN|JP|KR|AUS





# THANK YOU

*Thank you for your interesting and attention!  
If you need sample and technical data, please  
contact us without hesitation*



**Special  
chemicals**