



SCH Gluta Gold Q10

NEXT GENERATION PEPTIDES

Developments of new cutting-edge peptide-based drugs and molecules with pharmacological, diagnostic and cosmetic interest.

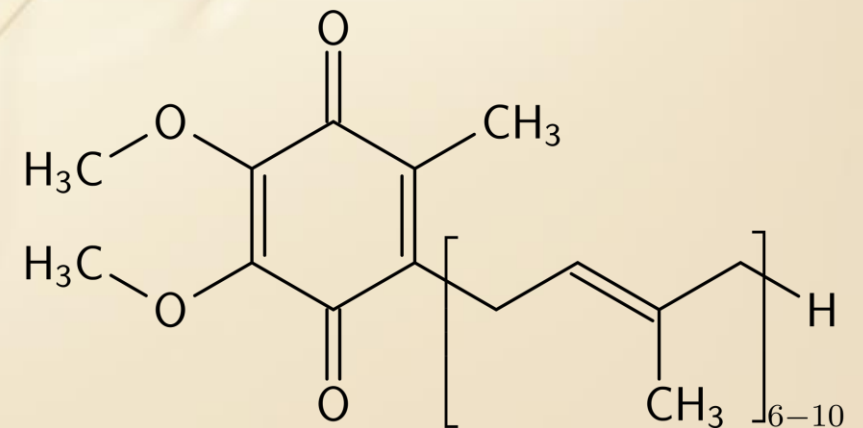
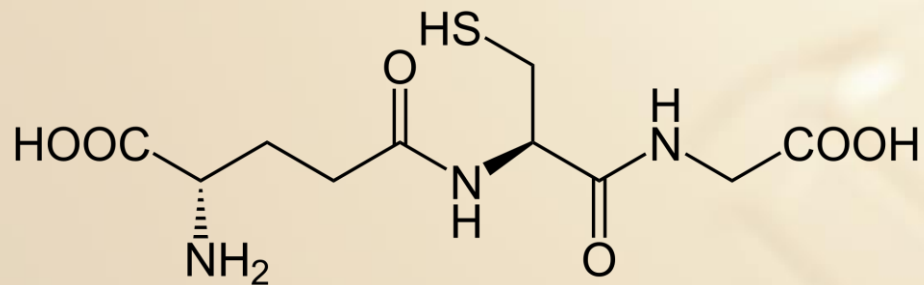
SCH Gluta Gold Q10

Gold particles improve bioavailability of actives for faster efficacy.

A unique multifunction gold conjugate releasing:

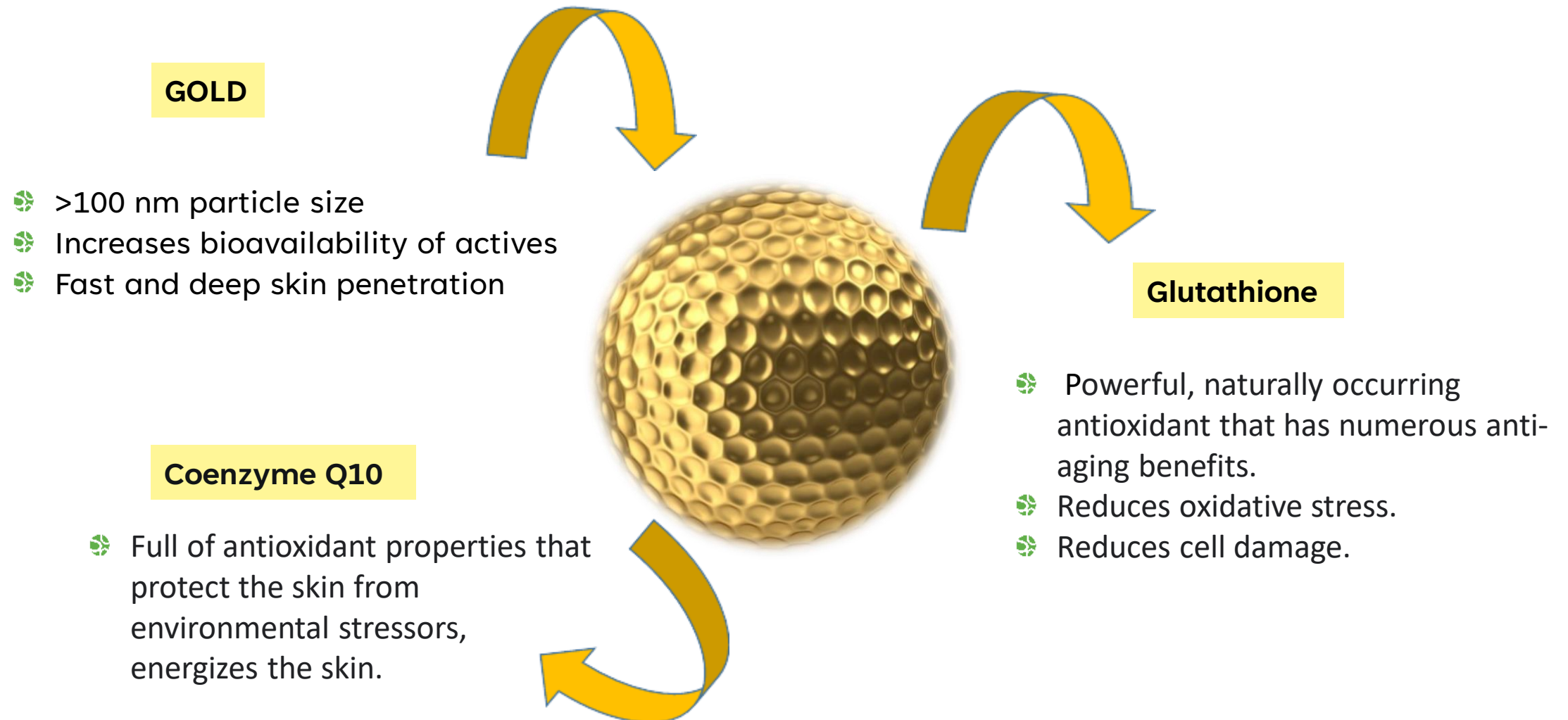
COENZYME Q10

GLUTATHIONE



SCH Gluta Gold Q10

SCH Gluta Gold Q10 : a multifunctional antioxidant ingredient.



SCH Gluta Gold Q10

Gold properties were well described for medical applications:

- Antioxidant and free radical scavenger.
- Anticancer.
- Antiheumatism
- Antimicrobial

Additional properties supporting gold nanocapsules:

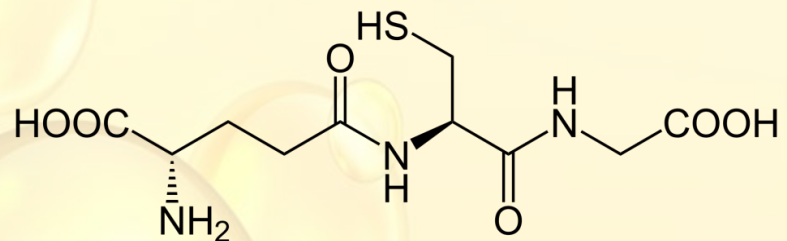
- Specific Surface area and adsorption energy.
- Enables physically powerful bonding to active biomolecules.
- Increases bioavailability of actives.
- Fast and Deep skin penetration.
- Biocompatibility.



SCH Gluta Gold Q10

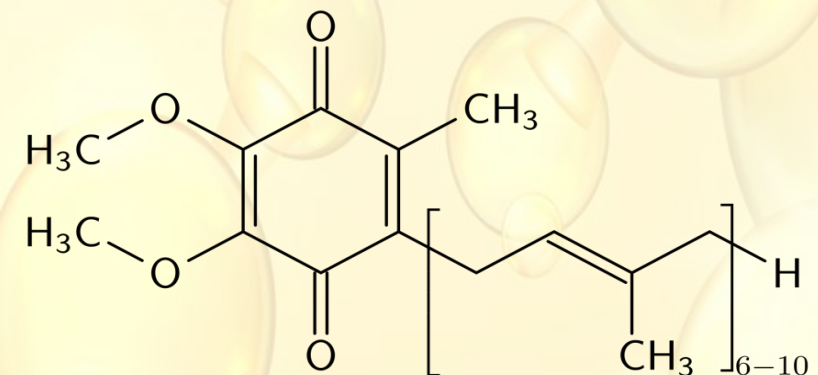
About Glutathione:

- Master antioxidant defense for cytoprotection.
- Detoxifies reactive oxygen species and toxins.
- Maintains cell redox balance essential for cell function.
- Protects cells from DNA and mitochondrial damage and ensures survival of skin cells.



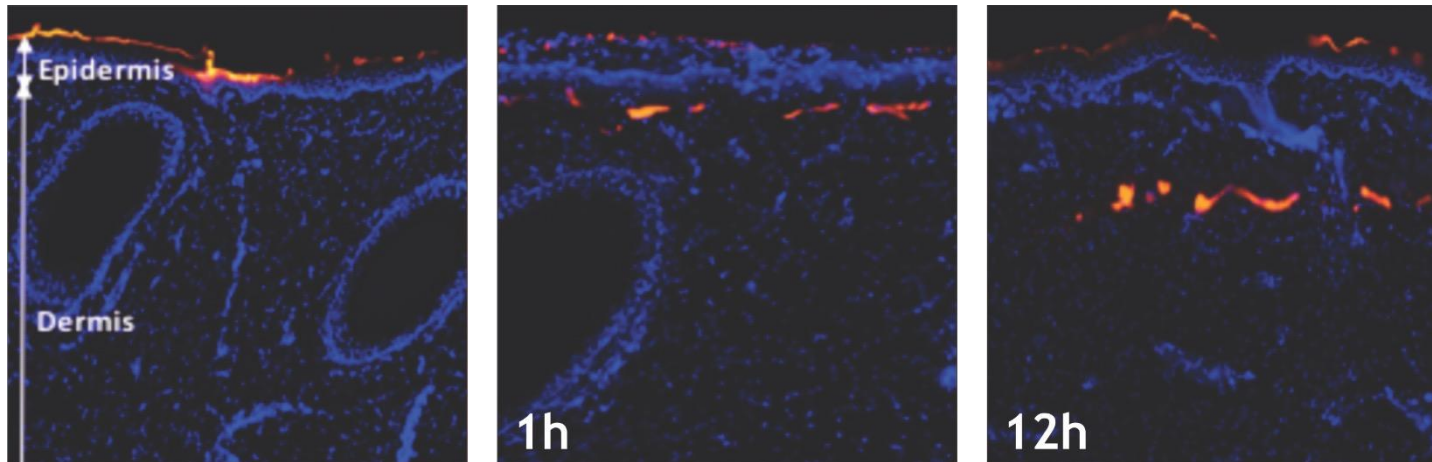
About Coenzyme Q10:

- Oxidative stress results in DNA damage and disorganization in the dermal matrix.
- In skin, Coenzyme Q10 acts as an antioxidant with 10-fold higher levels in the epidermis than in the dermis.



SCH Gluta Gold Q10

Gold Carrier potentiates the skin penetration of active ingredients.



- Confocal microscopy images of skin slices.
- SCH Gluta Gold Q10 was applied into pig skin.
- Presence of SCH gluta Gold Q10 was followed by a fluorescent marker along time.

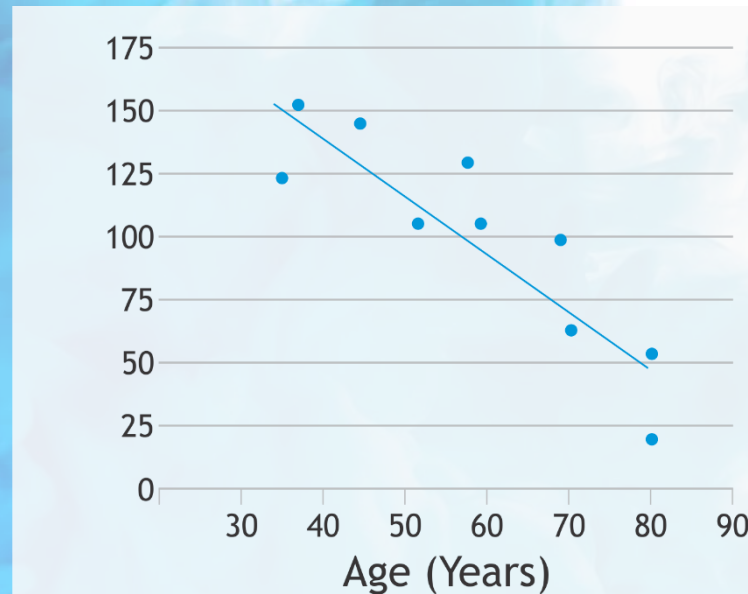


SCH Gluta Gold Q10

SCH Gluta Gold Q10 fights against the loss of Coenzyme Q10.

- 🌱 SCH GLUTA GOLD Q10 COMPENSATES Q10-EPIDERMAL LOSS INDUCED BY AGING
- 🌱 The functional loss of mitochondria explains aging; therefore, restoration of mitochondrial function rejuvenates skin.
- 🌱 CoQ10 is the most important factor for effective mitochondrial function.

Q10 level
(fmol/ug cholesterol)



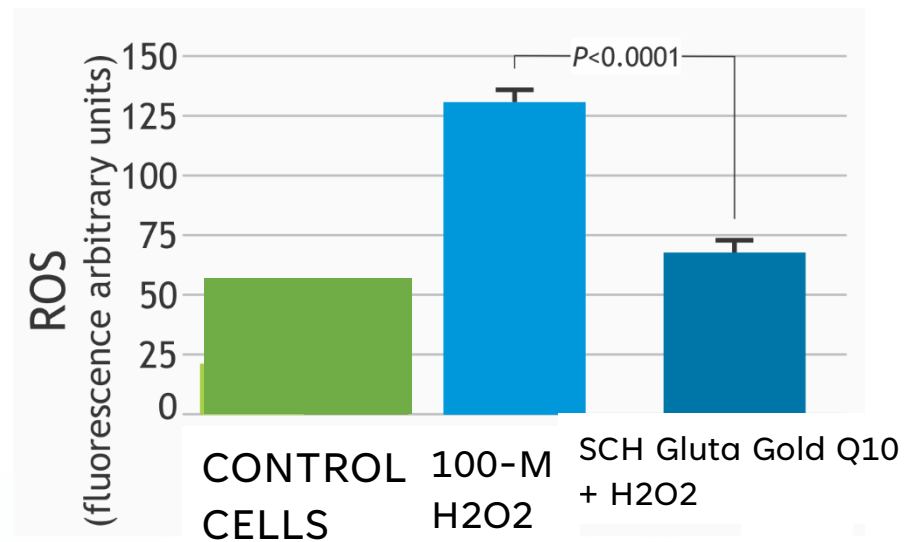
CoQ10 levels decrease in the epidermis between the ages of 30 and 80 years. Values are normalized to the cholesterol content of the samples (Hoppe et al Biofactors 9: 371-378,1999)

SCH Gluta Gold Q10

**SCH Gluta Gold Q10 inhibits generation of reactive oxidative species (ROS).
In Keratinocytes exposed to H2O2.**

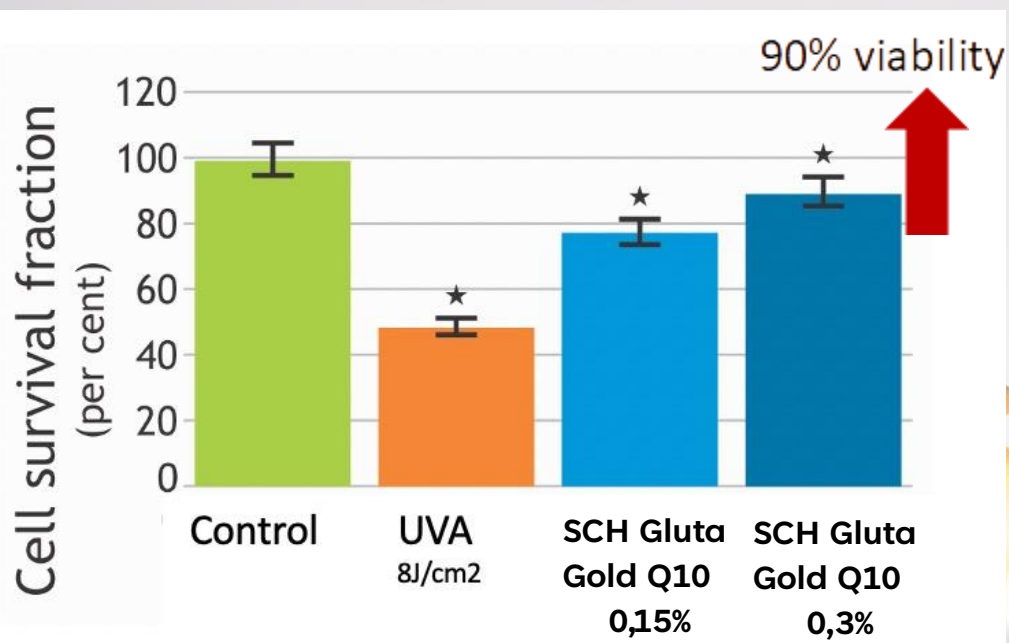
HaCaT keratinocytes showed a significant elevation in ROS immediately after oxidative challenge.

The elevation in ROS is blocked by SCH Gluta Gold Q10. The fluorescence intensity (Ex: 485 nm per Em: 530 nm) of each cell lysate was measured. Intracellular ROS levels are expressed as change in fluorescence intensity per μg protein.



SCH Gluta Gold Q10

SCH Gluta Gold Q10 protects keratinocyte viability after UV challenge.



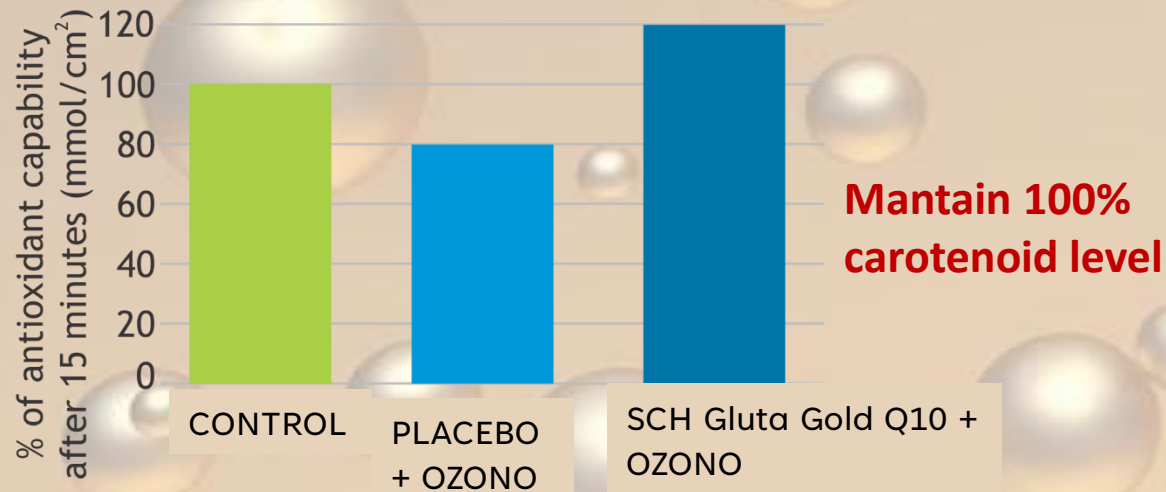
Cell viability was evaluated through a MTT test a yellow compound that is bio-reduced by cells into a purple-coloured formazan product. This conversion is accomplished by NADPH or NADH produced by dehydrogenase enzymes in metabolically active cells.

The cells were treated with MTT (1mg/ml) and incubated for 3 hours later solution of MTT was discarded and 100 µl of isopropanol were added in each well in order at 570 nm.

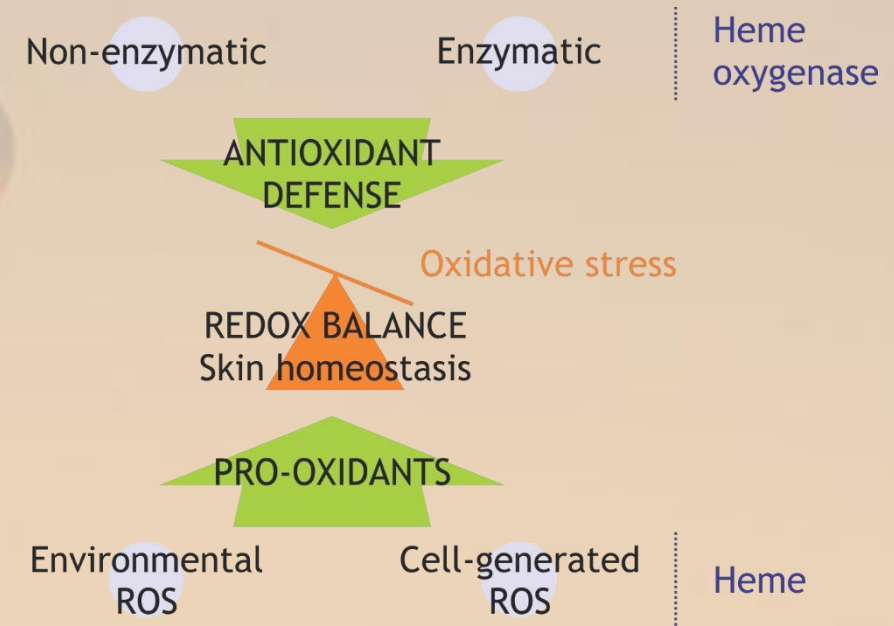
SCH Gluta Gold Q10

β carotenoids skin level after oxidative challenge with ozone, in vivo study.

- 🌿 Skin was exposed to Ozone flow during 15 minutes after application of placebo or SCH Gluta gold Q10 onto face.
- 🌿 Carotenoids Autofluorescence measured on the cheeks at D0 and D0+15, for hemiface treated with placebo or 0.3% SCH Gluta Gold Q10 cream.



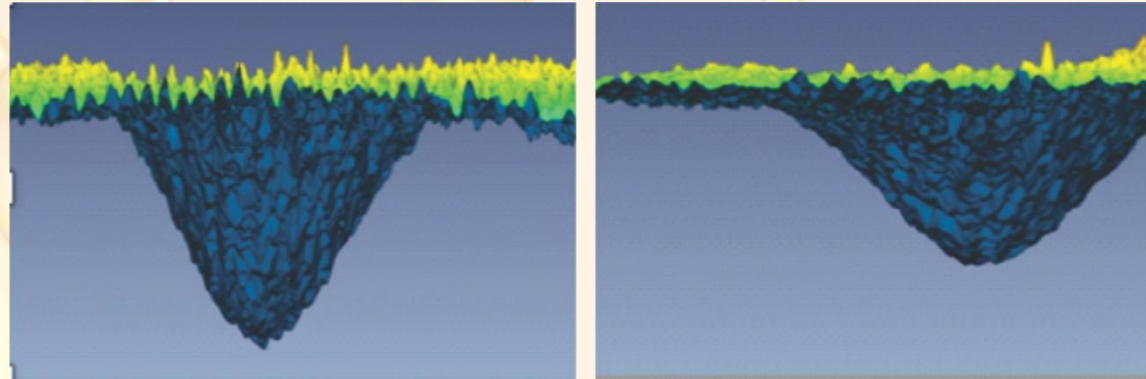
SCH Gluta Gold Q10 compensates redox unbalance in aging skin by releasing glutathione.



SCH Gluta Gold Q10 (0.3%) PROTECTS AGAINST OXIDATIVE DAMAGE AND KEEPS CAROTENOID SKIN LEVEL

SCH Gluta Gold Q10

SCH Gluta Gold Q10 effect on skin elasticity in vivo study.



**35-60 YEARS OLD
TWICE DAILY
SCH GLUTA GOLD Q10 0.30%
CREAM APPLICATION**

IMAGES OF SKIN DEFORMATION USING
DYNASKIN VOLUMEN AND MAXIMUM
DEPTH DEFORMATION MEASURED AFTER
A CALIBRATED AIRFLOW BEAM IN
PLACEBO VS SCH Gluta Gold Q10 GROUPS

SCH Gluta Gold Q10

SCH effect on skin elasticity; in vivo study.

35-60 YEARS OLD
TWICE DAILY
MITOGOLD 0.30%
CREAM APPLICATION



75% Less deformation
Means 75 % higher firmness

% Skin deformation after an airflow after 28 days treatment with 0.3% SCH Gluta Gold Q10

DynaSKIN, uses a positive pressure to deform the skin and test its response to mechanical force application. The instrument releases a force-calibrated jet of air, close to the skin surface, that indents the skin simulating, tactile judgement of firmness. The deformations' 3D geometry and deformation recovery are quantifiable. These parameters correspond to the mechanical properties of the skin described by its stiffness or firmness. The larger the deformation, the less firm the skin.

SPECIFICATIONS

- 🌿 Apperance: Solution
- 🌿 INCI.: Water, xanthan gum, Gold, Gluthatione, Coenzyme Q10
- 🌿 Recommended dose: 0.30%
- 🌿 Legal status: EU|US|CN|JP|KR|AUS

THANK YOU

*Thank you for your interesting and attention!
If you need sample and technical data, please
contact us without hesitation*

