

# DEPIL RETARD



# Specifications

---

- ✓ The problem with the rapid growth of body hair, after depilation, did not have a proper solution up until now. So much so, that the user found it necessary to undergo, ever more frequent, depilation treatments, regardless of the depilation technique that was used: pulling, shaving or chemical destruction by means of creams with thioglycolates. Any of these procedures involved expense, lost time and physical discomforts.
- ✓ **DEPIL RETARD** (Body hair growth delaying) by BIOGRÜNDL, S.L. has been released to solve the mentioned inconveniences, by updating the techniques and using the suited active ingredients, resulting in an extraordinary delay of the normal growth of body hair. With this one, can extend the time between two successive depilation sessions, also making these more bearable as the hair physiological structure has been weakened.





# Specifications

---

- ✓ **DEPIL RETARD** (Body hair growth delaying) by BIOGRÜNDL, S.L. acts in a completely natural manner, as it is based on the joint effect of three vegetable extracts: Rock tea (*Jasonia glutinosa*), Aloe vera (*Aloe barbadensis*) and Witch Hazel (*Hamamelis virginiana*), which complement and enhance their inhibiting action on the division and growth of germinal hair cells. This action is due to the high content in astringent agents (tannins) that lead to a precipitation of the proteins, as well as, their denaturation.
- ✓ **DEPIL RETARD** (Body hair growth delaying) by BIOGRÜNDL, S.L., contains a cationic surfactant that boosts the actions of the vegetable actives above mentioned, leading to better and deeper penetration into the hair follicle.





A close-up photograph of a person's legs, showing the skin texture and the results of hair removal. The legs are positioned diagonally across the frame, with the right leg in the foreground and the left leg slightly behind it. The skin is smooth and light-colored, contrasting with the darker skin of the left leg. The background is a soft, out-of-focus white and light blue.

# Suggested Applications

---

- ✓ After epilation products.





# Properties

---

- ✓ Body hair growth delaying



INCI

JASONIA GLUTINOSA EXTRACT, ALOE BARBADENSIS LEAF EXTRACT,  
HAMAMELIS VIRGINIANA LEAF EXTRACT, CETRIMONIUM CHLORIDE, LAURYL  
ISOQUINOLINIUM BROMIDE, SALICYLIC ACID, MENTHOL

# Body hair growth delaying action

---

Assay: Double blind spot  
trial and subsequent  
cosmetic evaluation

Placebo

Depil  
Retard 2%

Depil  
Retard 5%

Left Side

Right Side





# Body hair growth delaying action

---

Assay: Double blind spot trial and subsequent cosmetic evaluation

## EVALUATION

### ✓ LEFT SIDE PART TO BE TREATED:

Placebo, 30 volunteers, suitable cosmetic base.

### ✓ RIGHT SIDE PART TO BE TREATED:

DEPIL RETARD 2%, 15 volunteers, suitable cosmetic base.

### ✓ RIGHT SIDE PART TO BE TREATED:

DEPIL RETARD 5%, 15 volunteers, suitable cosmetic base.



# Body hair growth delaying action

Assay: Double blind spot trial and subsequent cosmetic evaluation



(\*) Body hair growth delaying action was determined by observation of time increase between successive epilations.



Total number of days in which the assay was performed (treatment was applied):  
D = 12 days (monthly during the effectiveness test).



Total number of days in which the results were measured:  
D' = 1 day (effectiveness test last day).

# Body hair growth delaying action

Assay: Double blind spot trial and  
subsequent cosmetic evaluation



15



15



22 - 47



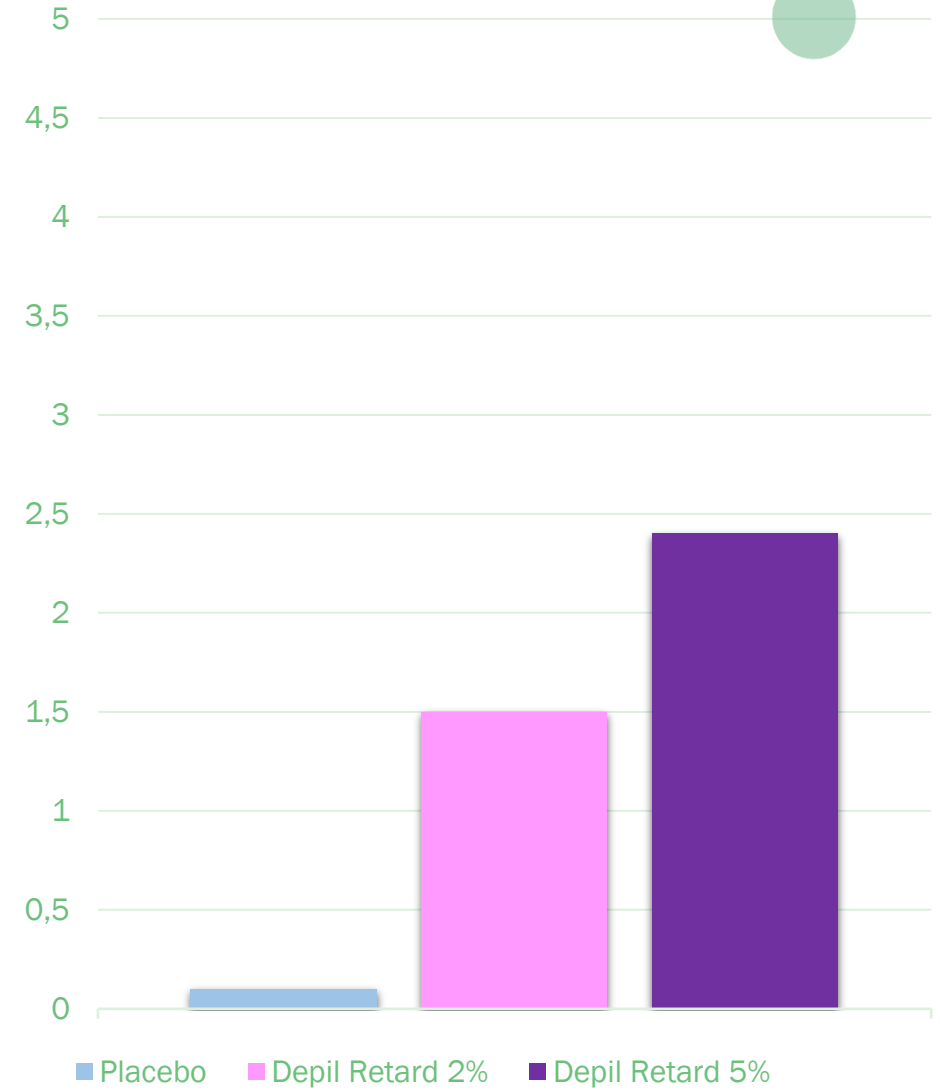
12 months



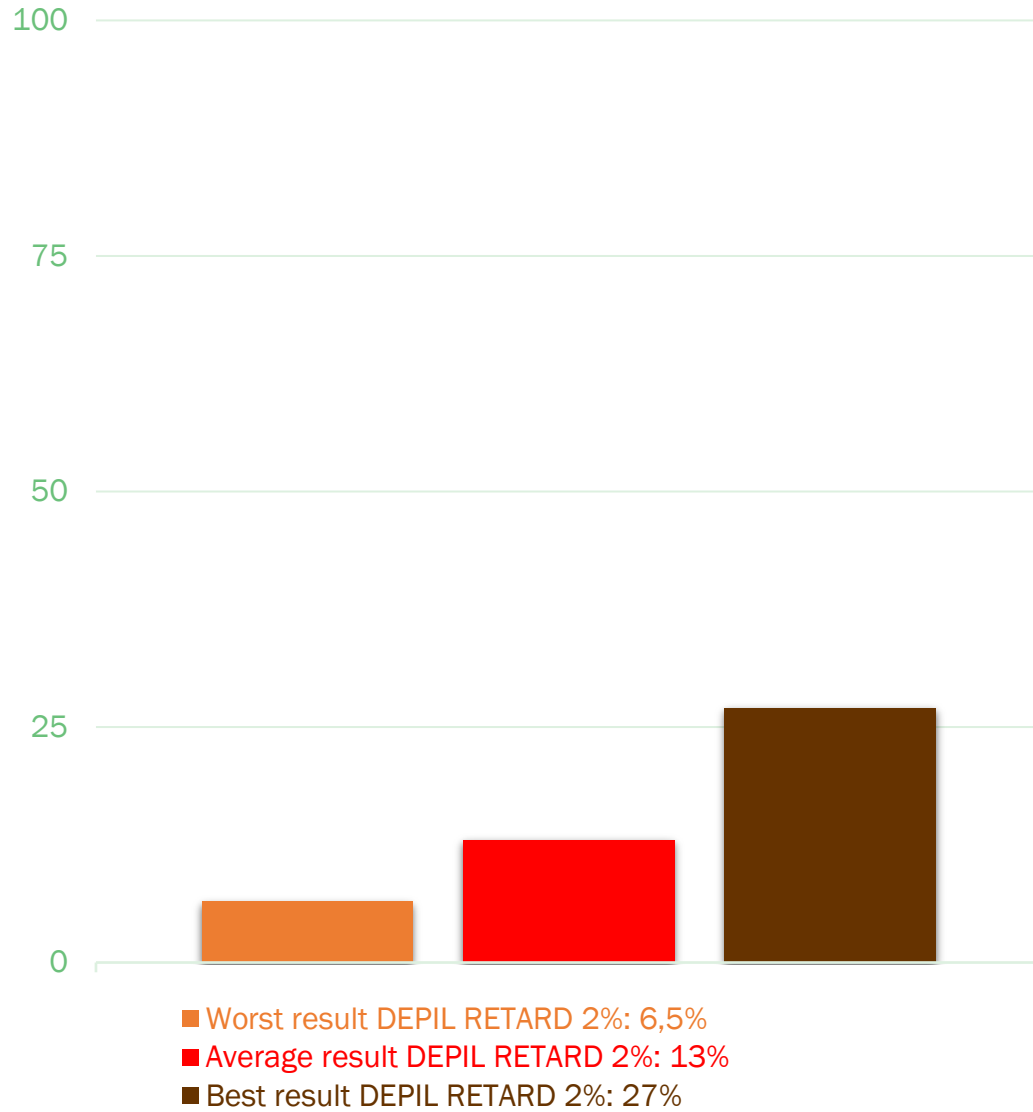
# Skin condition evaluation after 12 months

---

Average score (AS) regarding body hair growth delaying action (\*)



Average improvement (%) regarding  
body hair growth delaying action

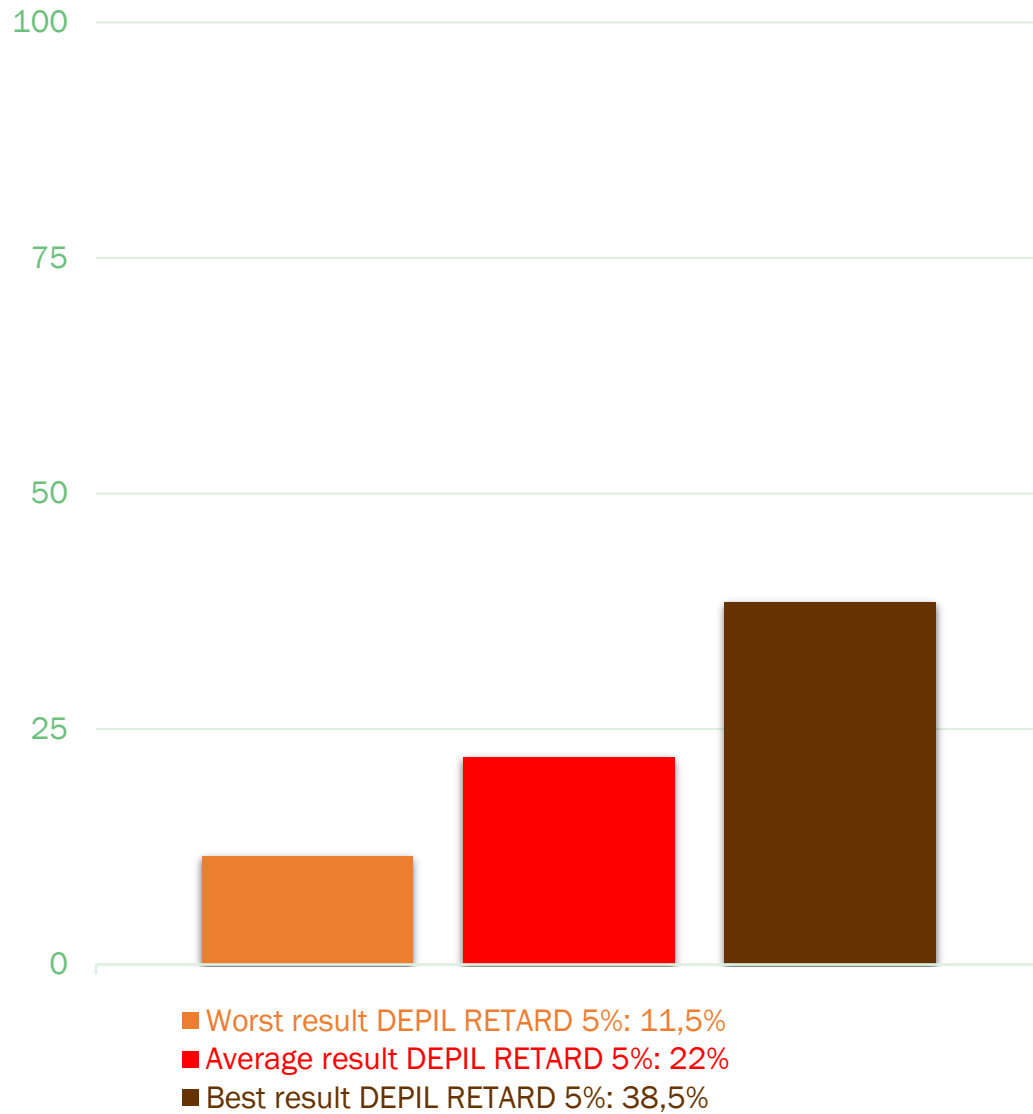


# Depil Retard 2%

---



Average improvement (%) regarding  
body hair growth delaying action



# Depil Retard 5%





[www.biogrundl.es](http://www.biogrundl.es)

**Biogründl Factory II**  
Polígono Industrial El Regàs  
C/ Vapor, 1 · 08850 Gavà  
Barcelona (SPAIN)

**Biogründl Station**  
El Pouet de Tomàs  
Tarragona (SPAIN)  
+34 936 605 512