

NEW RANGE OF INGREDIENTS



**Special
chemicals**

**Leading the cosmetics
industry to the next level**

www.special-chemicals.es

CATALOGUE

SCH SHELLCARE®

Encapsulated ingredients for controlled release

SCH BLEND™

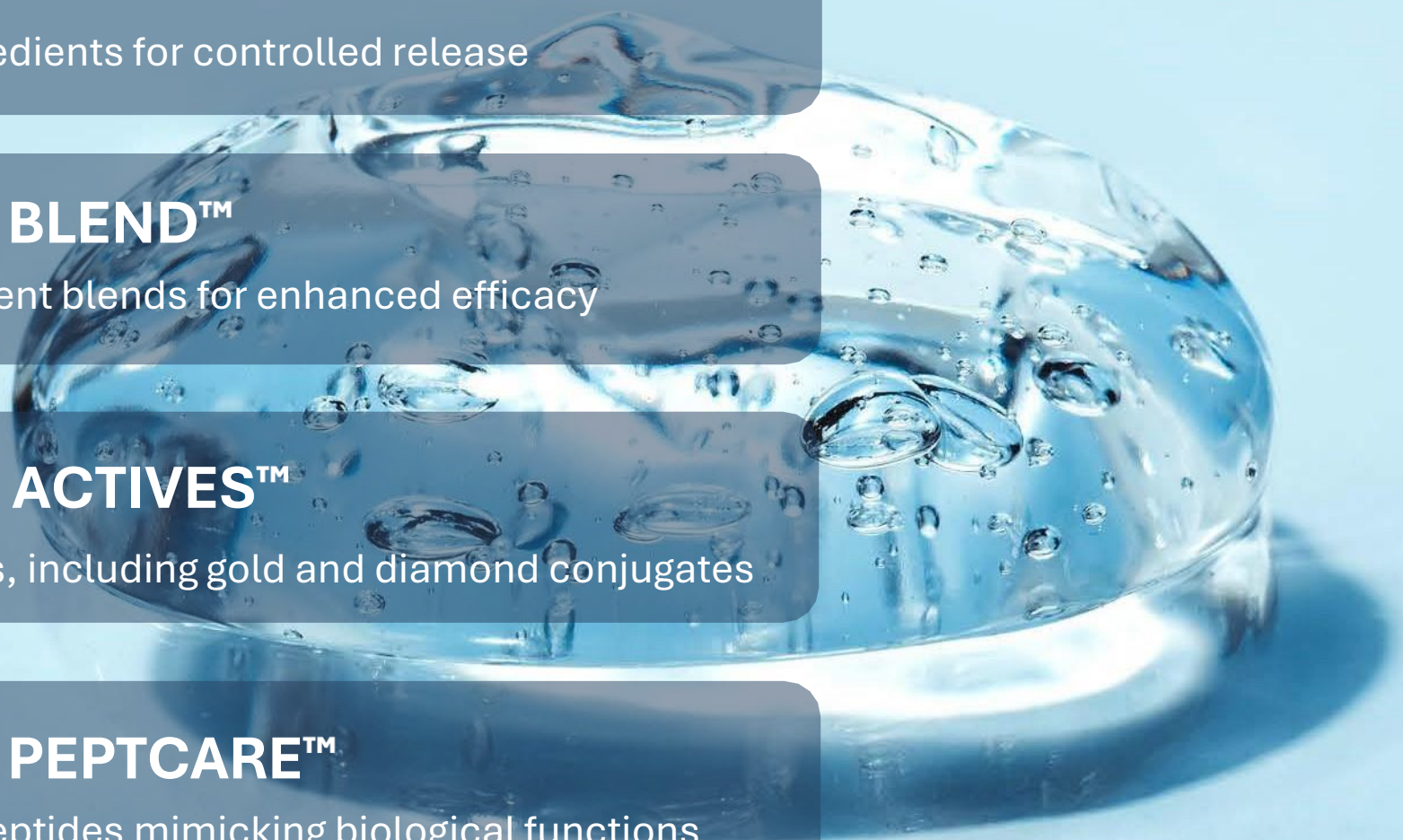
Functional ingredient blends for enhanced efficacy

SCH ACTIVES™

Specialized actives, including gold and diamond conjugates

SCH PEPTCARE™

Free biomimetic peptides mimicking biological functions



CATALOGUE

SCH SHELLCARE®

SCH BLEND™

SCH ACTIVES™

SCH PEPTCARE™



SCH SHELLCARE®

ENCAPSULATED ACTIVES

BENEFITS

Allows the ingredient to penetrate deeper into the skin.

The capsule has a slow-release system that ensures gradual absorption of the ingredient. Not only it improves stability, it also improves action and absorption.

TYPES OF ENCAPSULATION

- Polycaprolactone (PCL): is a biodegradable and biocompatible polymer that belongs to the polyester family. It is of synthetic origin.
- Alginates: 100% natural polysaccharide found in the cell walls of marine algae, such as brown algae.



SCH SHELLCARE®

ENCAPSULATED ACTIVES

SCALP

SCH ShellCare® HAIR GROW

BIOTINOYL TRIPEPTIDE-1, APIGENIN,
PANTOTHENIC ACID

SCH ShellCare® HYALUSILK

HYDROLYZED SILK, HYALURONIC ACID

SCH ShellCare® ANTIGREY

PALMITOYL TETRAPEPTIDE-20, L-
METHIONINE, ACETYL-TYROSINE



WHITENING

SCH ShellCare® TRAX

TRANEXAMIC ACID

SCH ShellCare® TRAX Plus

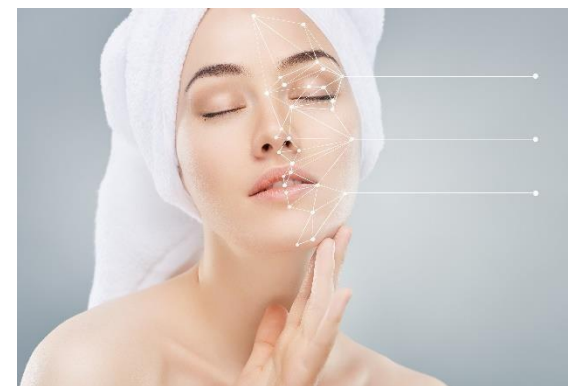
TRANEXAMIC ACID, NONAPEPTIDE-1

SCH ShellCare® VIT C A

ETHYLASCORBIC ACID

SCH ShellCare® GLUCOTRAX

TRANEXAMIC ACID, GLUCONOLACTONE,
NONAPEPTIDE-1



SCH SHELLCARE®

ENCAPSULATED ACTIVES

ACNE

SCH ShellCare® AZE

AZELAIC ACID

SCH ShellCare® AZE Plus

AZELAIC ACID, PALMITOYL
TRIPEPTIDE-36

SCH ShellCare® GLUC

GLUCONOLACTONE



TANNING

SCH ShellCare® LIPO TAN

ACETYL HEXAPEPTIDE-1



ANTIAGING

SCH ShellCare®RR

RESVERATROL, ORYZASATIVA BRAN
OIL EXTRACT

SCH ShellCare®RP

RETINYL PALMITATE



CATALOGUE

SCH SHELLCARE®

SCH BLEND™

SCH ACTIVES™

SCH PEPTCARE™



SCH Blend™ Hydrant

TREHALOSE, SODIUM PCA, SODIUM HYALURONATE,
SODIUM POLYGLUTAMATE

Combination of multifunctional ingredients with important benefits to guarantee an extreme level of hydration to the skin and/or hair.

- Filmogen - pH regulating
- Moisturising - filmogenic
- Deep moisturising and repairing
- Skin and hair conditioner
- Anti-pollution - environmental stress - procollagen





SCH BLEND™

SCH Blend™ Well-Age

POTASSIUM AZELOYL DIGLYCINATE, GLABRIDIN,
TETRAHYDROPIPERINE, POLYGLYCERYL-6
CAPRYLATE, POLYGLYCERYL-4 CAPRATE,
NONAPEPTIDE-1

- Clarifying and whitening
- Moisturising
- Anti-inflammatory
- Anti-free radicals
- Anti-wrinkle
- Penetration enhancer
- Brightening

SCH BLEND™

SCH Blend™ EyeLift

PULLULAN, POLYGLYCERYL-6 CAPRYLATE,
POLYGLYCERYL-4 CAPRATE, ACETYL
TETRAPEPTIDE-5, DIPEPTIDE-2, ACETYL
HEXAPEPTIDE-8, ACETYL OCTAPEPTIDE-3,

- Draining
- Decongestant
- An-glycation
- Lifting BTX effect
- Periorbicular Ri-dosage
- Anticoagulant
- Detoxifying
- Draining
- An-inflammatory
- Lifting
- Texturizing
- Moisturizing



CATALOGUE

SCH SHELLCARE®

SCH BLEND™

SCH ACTIVES™

SCH PEPTCARE™



SCH ACTIVES™

CONJUGATED

Definition of conjugated actives

Conjugated actives are bioactive molecules combined with diamond or gold particles to enhance their efficacy and stability in cosmetic applications.

Both particles have functional and active properties.

Importance in advanced cosmetics

These innovative actives enable the development of high-performance products that offer unique skin benefits, increasing competitiveness in the luxury cosmetics market.

Diamond and gold conjugated actives have gained popularity due to their exceptional skin care properties.



Conjugated actives with DIAMOND

The conjugation process involves attaching bioactive ingredients to diamond nanoparticles, taking advantage of the unique properties of diamond to enhance the penetration and efficacy of the active ingredients.

Unique characteristics

- Purity: Diamonds are one of the purest materials and can be used in formulations without causing irritation.
- Shine: Diamond products bring exceptional radiance and luminosity to the skin.
- Luminous effect: Helps reflect light, enhancing the skin's radiant appearance.

With particle sizes larger than 100 nm, it does not meet the criteria to be considered a nanomaterial, ensuring safety and compliance with the nanomaterial's regulation (European Regulation).

Benefits

- Anti-ageing effects: Diamond conjugated actives help reduce the appearance of fine lines and wrinkles.
- Improved skin radiance: Products with diamond nanoparticles improve skin tone and clarity, providing a natural glow.
- Exfoliating and rejuvenating properties: They help remove dead skin cells from the surface, promoting cell regeneration and a more youthful appearance.



Conjugated actives with GOLD

Conjugation involves attaching cosmetic actives to gold particles, improving the bioavailability and stability of the actives.

bioavailability and stability of the active ingredients.

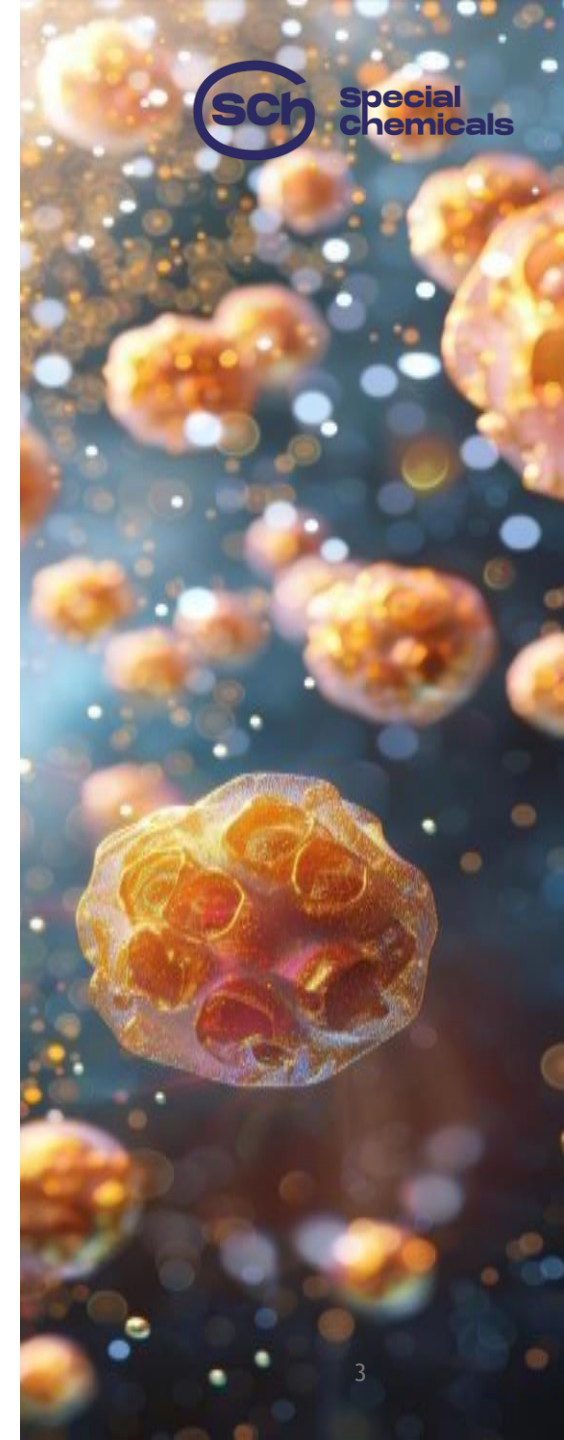
Unique characteristics

- **Luxury:** Gold is a symbol of luxury and exclusivity, increasing the perceived value of the product.
- **Antioxidant:** Gold helps protect the skin against free radical damage.
- **Anti-inflammatory:** Reduces inflammation and soothes the skin, improving its overall appearance.

With particle sizes larger than 100 nm, it does not meet the criteria to be considered a nanomaterial, ensuring safety and compliance with the nanomaterial's regulation (European Regulation).

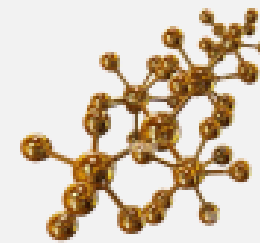
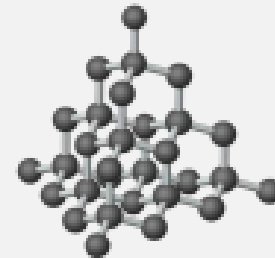
Benefits

- **Antioxidant and anti-inflammatory properties:** Gold helps protect the skin from environmental damage and reduce inflammation.
- **Brightening and revitalizing effects:** Boosts the skin's radiance and vitality, giving it a radiant appearance.
- **Improved skin elasticity:** Gold products improve skin firmness and elasticity, reducing sagging.





03 Comparative table



BENEFIT	DIAMOND	GOLD
Antiaging	Yes	Yes
Improvement in luminosity	High	Medium
Exfoliating properties	Yes	No
Antioxidant	Medium	High
Anti-inflammatory	No	Yes
Improvement in elasticity	Medium	High

Recommended uses based on skin type and need

→ **DIAMOND:** Ideal for dull, aged skin needing renewal.

→ **GOLD:** Ideal for sensitive, inflamed skin with signs of oxidative stress.

CONJUGATED

SCH Actives™ Diamond Res C

PALMITOYL PENTAPEPTIDE -4, RESVERATROL, COLLOIDAL DIAMOND

SCH Actives™ GlutaGold C

GLUTATHIONE, UBIQUINONE, GOLD

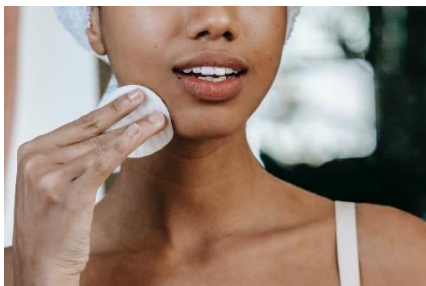
SCH Actives™ Antiox C

GOLD, ASCORBIC ACID, FERULIC ACID

SCH Actives™ Diamond C

DIAMOND POWDER, PENTAPEPTIDE-3, ACETYL HEXAPEPTIDE-8





EXFOLIATING

SCH Actives™ Mandelic Plus

MANELIC ACID, ACETYL DIPEPTIDE-3-AMINO HEXANOATE

SCH Actives™ ExfoPwd

ACETYL DIPEPTIDE-3, AMINO HEXANOATE



SCALP

SCH Actives™ HairReact

BIOTYNOYL TRIPEPTIDE-1, APIGENIN



ANTI-STRECH MARKS

SCH Actives™ Stretch Marks

OLIGOPEPTIDE-24, ASIATICOSIDE



BOTOX

SCH Actives™ B-Tox

ACETYL HEXAPEPTIDE-8,
PALMITOYL PENTAPEPTIDE-4



EYE LASH GROW

SCH Actives™ Eyelash

Grow ACETYL TETRAPEPTIDE-3,
COPPER TRIPEPTIDE-1



ANTIOXIDANT

SCH Actives™ GLUT

GLUTATHIONE



MULTIFUNCTIONAL

SCH Actives™ LIPOCU

COPPER TRIPEPTIDE-1

CATALOGUE

SCH SHELLCARE®

SCH BLEND™

SCH ACTIVES™

SCH PEPTCARE™



Peptides are small chains of amino acids, which are the building blocks of proteins. They are **advanced, highly effective ingredients** that can be a significant differentiator in the cosmetic market.

At the cellular level, peptides can act as **biological signals** that tell cells to produce more **collagen and elastin**, which are essential to keep skin firm and elastic, for a more youthful and healthy expression.

MECHANISMS OF ACTION

Each peptide or active has **unique properties**, such as wrinkle reduction, improved skin firmness and elasticity or added radiance, as they can interact with different **cellular mechanisms** once they meet the skin.

Special Chemicals introduces its innovative line of biomimetic free peptides for cosmetics, designed to boost the effectiveness of cosmetic products.

These peptides offer a wide range of functions, such as reducing wrinkles, stimulating collagen production, cell regeneration, and improving skin firmness and elasticity.

Each peptide in our catalogue has been developed to provide specific benefits and enhance cosmetic formulations, providing advanced solutions for skin care and rejuvenation.



SCH PeptCare™ Ac8

SCH PeptCare™ AcDD10

SCH PeptCare™ AcH1

SCH PeptCare™ AcH3

SCH PeptCare™ AcH39

SCH PeptCare™ AcO3

SCH PeptCare™ AcTT15

SCH PeptCare™ AcTT5

SCH PeptCare™ CuT1

SCH PeptCare™ DD4

SCH PeptCare™ D6

SCH PeptCare™ DDBD

SCH PeptCare™ H11

SCH PeptCare™ H2

SCH PeptCare™ H9

SCH PeptCare™ MiH16

SCH PeptCare™ MiH17

SCH PeptCare™ N1

SCH PeptCare™ O11

SCH PeptCare™ OLD15

SCH PeptCare™ OO1

SCH PeptCare™ OO24

SCH PeptCare™ OO51

SCH PeptCare™ P18

SCH PeptCare™ P3

SCH PeptCare™ PaD2

SCH PeptCare™ PaP4

SCH PeptCare™ PaT1

SCH PeptCare™ PaT36

SCH PeptCare™ PaT5

SCH PeptCare™ PaTT7

SCH PeptCare™ T1

SCH PeptCare™ T10Ci

SCH PeptCare™ T2

SCH PeptCare™ T3

SCH PeptCare™ T32

SCH PeptCare™ AcTT3

SCH PeptCare™ DD18

SCH PeptCare™ OO20

SCH PeptCare™ PaTT3

