

SCH B-TOX PEPT

ANTI-AGING, ANTI WRINKLE
& EXPRESSION LINES
SKIN CONDITIONING

NEXT GENERATION PEPTIDES

Developments of new cutting-edge peptide-based drugs and molecules with pharmacological, diagnostic and cosmetic interest.

SCH B-Tox Pept

Ideal combination of two botox-like peptides: pentapeptide-3 and acetyl hexapeptide-8 that stops wrinkles and expression lines formation

🌿 Peptides acting in a synergistic manner significantly inhibit formation of the SNARE complex

🌿 This combination inhibit calciuminduced norepinephrine release in chromaffin cells and increase type I and III collagens improving skin thickness.



Before

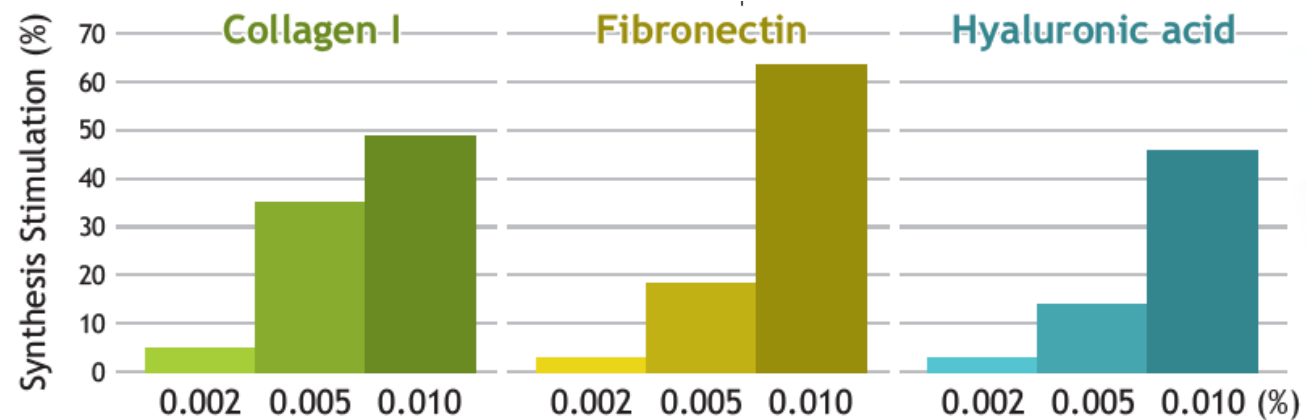


After

SCH B-Tox Pept

Synthesis of ECM molecules in HDF
incubated for 72h, in vitro

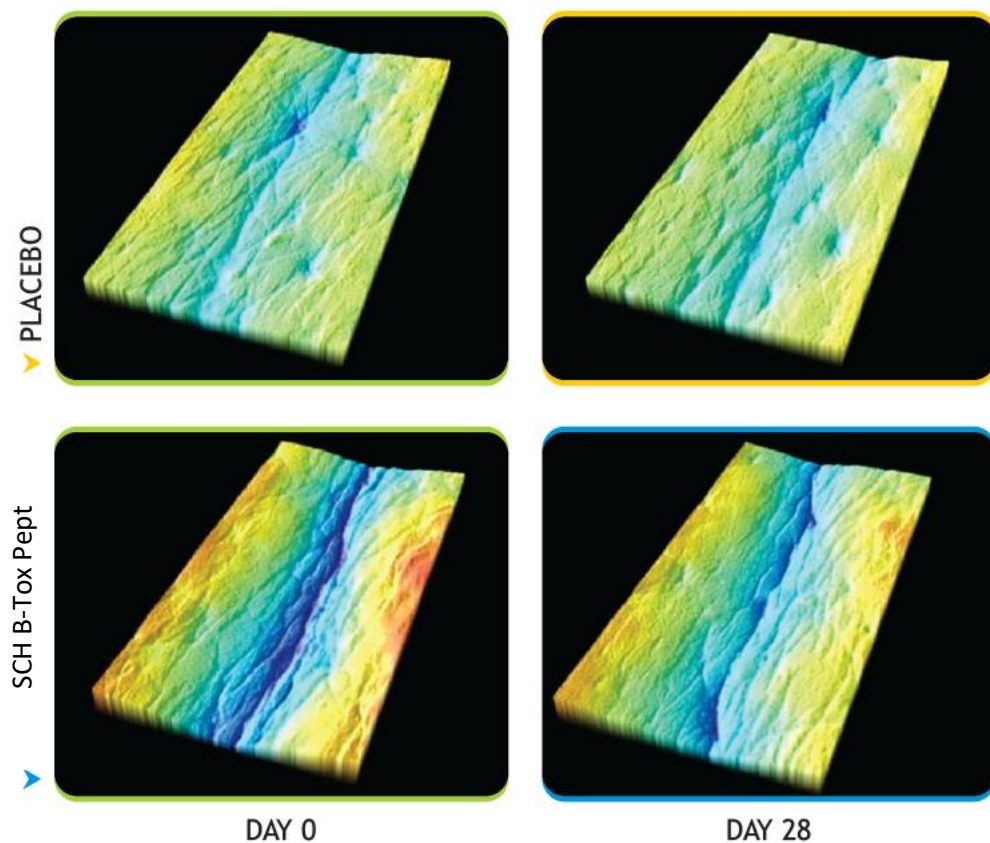
SCH B-Tox Pept
3% also increases type I
and type III collagens content



SCH B-Tox Pept

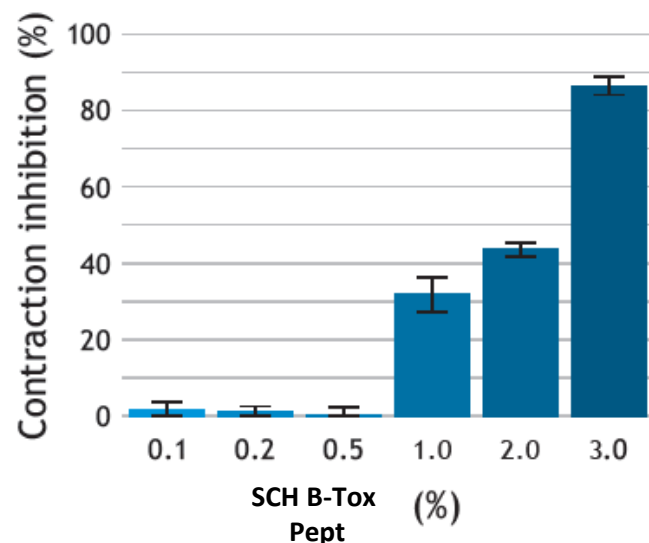
SCH B-Tox Pept significantly reduces wrinkles in vivo

Representative images of the silicon replicas before and after 28 day treatment with a cream containing 3% SCH B-Tox Pept



SCH B-Tox Pept

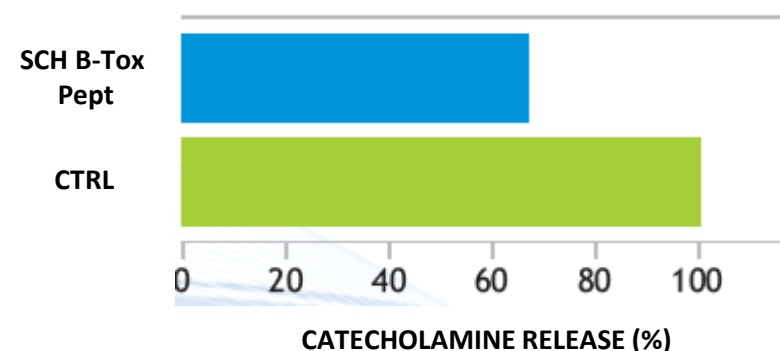
SCH B-Tox Pept treatment inhibited muscle contraction in *C. elegans*



The release of catecholamines is a clear indicator of the potent anti-wrinkle activity of peptide combination ▼

Chromaffin cells are often used as models for study of neural properties and processes, for instance, exocytosis and catecholamines release is equivalent of acetylcholine being secreted from nerve cells.

Chromaffin cells were incubated with tritiated noradrenaline/adrenaline and RELIDUO



SPECIFICATIONS

- Apperance: Powder form
- INCl.: dextran, pentapeptide-3, acetyl hexapeptide-8
- Solubility: Water soluble
- Recommended dose: 3-5% from 1g/L solution
- Legal status: EU|US|CN|JP|KR|AUS

THANK YOU

*Thank you for your interesting and attention!
If you need sample and technical data, please
contact us without hesitation*

